

**TOYOTA**

2023 Sienna

2023 SIENNA

# More than enough.

Get ready to take on the day — and look good while doing it. The 2023 Toyota Sienna comes loaded with all the tech you crave, the space you need, and the efficiency to take you farther. Standard Apple CarPlay<sup>®1</sup> and Android Auto<sup>™2</sup> compatibility let you take your favorite apps along for the ride. Sienna's class-leading EPA-estimated 36 combined mpg<sup>3</sup> helps answer whatever the day calls for. And introducing the 25th Anniversary Special Edition, to celebrate Sienna's 25 years of design work in Michigan and assembly in Indiana, outfitted with signature touches to bring added style to your every day.



XSE shown in Ruby Flare Pearl<sup>50</sup>



Platinum shown in Predawn Gray Mica.



25th Anniversary Special Edition shown in Celestial Silver Metallic.



See numbered footnotes in Disclosures section.



XSE shown in Ruby Flare Pearl<sup>®</sup> with XSE Plus Package.



Platinum shown in Predawn Gray Mica.



Limited AWD shown in Cypress.

## Sporty styling

With available 20-in. dark wheels and sporty black accents, including a honeycomb grille, Sienna's modern design matches your sense of style.

## EXTERIOR

# Style, with room to spare.

Whether you're going to your daughter's dance recital or taking your partner out for date night, Sienna's picture-perfect look is ready for any occasion.

## Premium exterior

Sienna's design is as stylish as it is functional. Its unmistakable silhouette inspires you to accomplish whatever's on the agenda, in style.

## Bold colors

Stand out from the pack with Sienna's eye-catching exterior colors. From Cypress green to Cement, there's a color that'll make a statement wherever you go.

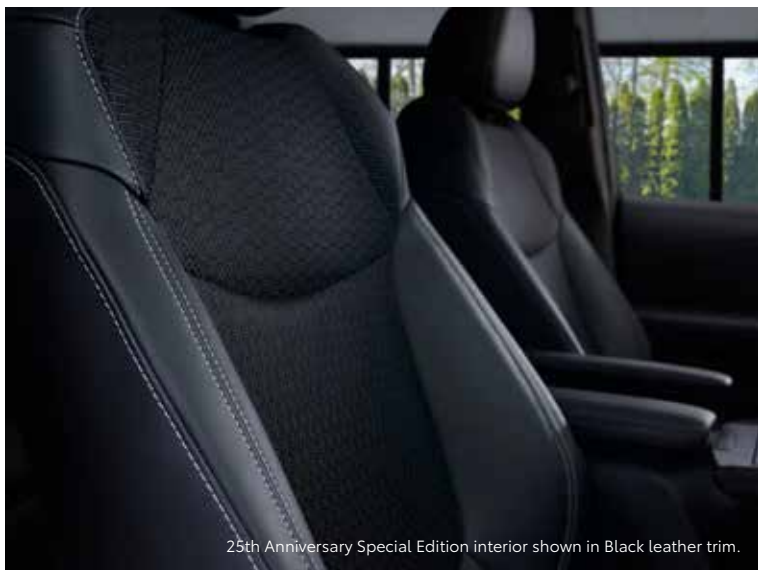
25TH ANNIVERSARY SPECIAL EDITION

# A legacy 25 years in the making.

This Special Edition celebrates 25 years of design work and assembly in the U.S. and comes outfitted with exclusive interior details like 25th Anniversary Smart Key fob cover, premium leather-trimmed seats and available built-in ottomans in the second row.<sup>4</sup> Loaded with signature touches, the 25th Anniversary Special Edition is ready for any occasion.



25th Anniversary Special Edition shown in Celestial Silver Metallic.



25th Anniversary Special Edition interior shown in Black leather trim.

## Memory seats and stitching

Sienna's 25th Anniversary Special Edition has a few tricks up its sleeve. Its memory seats let you save two positions each on the driver's seat, side mirrors and steering wheel to suit you and your partner's needs. And this Special Edition's Black leather-trimmed seats with silver-colored stitching give it an elegant look. Start it up and everything feels just right.



25th Anniversary Special Edition interior shown in Black leather trim.

## Distinguished interior details

This Special Edition comes outfitted with exclusive interior details like floor mats<sup>5</sup> and a key fob cover with signature 25 Years logo.

See numbered footnotes in Disclosures section.

INTERIOR

# Full of good ideas.

From the moment you sit behind the wheel of Sienna, you're the one in control. With no inch overlooked, Sienna's thoughtfully designed interior is the ideal balance of function and style.



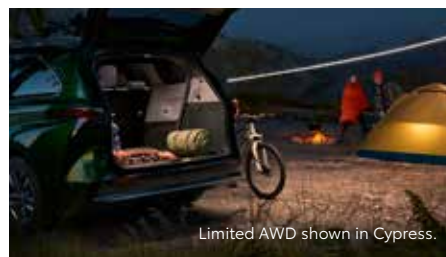
XSE interior shown in Moonstone with Gray Flannel SofTex<sup>®39</sup> trim.



Platinum interior shown in Noble Brown leather trim.



XSE shown in Ruby Flare Pearl<sup>59</sup> with XSE Plus Package.



Limited AWD shown in Cypress.

## Second-row captain's chairs

Sienna's available super-long-slide seats and captain's chairs with built-in ottomans<sup>4</sup> slide back for enhanced comfort or move up to make more room for cargo or passengers in the third row.

## Hands-free power sliding side doors and liftgate

Need an extra hand? Simply use a quick kicking motion with your foot to open and close Sienna's available kick-activated dual power sliding doors and rear liftgate, to make getting in and out easier.<sup>6</sup>

## 1500W-capable power outlet

With Sienna's available 1500W-capable power outlet,<sup>7</sup> you can bring the comforts of home wherever you go.



XSE shown in Ruby Flare Pearl.<sup>50</sup>

### Sport-tuned suspension

Sienna doesn't compromise on performance. Its available sport-tuned suspension helps deliver a dynamic drive every time you get behind the wheel.



Limited AWD shown in Cypress.

### All-Wheel Drive capability

Gravel, rain or snow, Sienna's available All-Wheel Drive (AWD) system helps give you confidence on unfamiliar roads.

## PERFORMANCE

# Keeps up with your hustle.

Every Sienna is a hybrid. Whether you're driving around the city during the day or taking a weekend road trip, Sienna's class-leading EPA-estimated 36 combined mpg helps keep you going.<sup>3</sup>



Platinum shown in Predawn Gray Mica; XSE shown in Ruby Flare Pearl.<sup>50</sup>

COMFORT

# Refined in all the right ways.



XSE interior shown in Moonstone with Gray Flannel SofTex<sup>®39</sup> trim.

## Four-zone climate control

You like it hot. Your partner likes it cool. Your son needs it to be 70 degrees exactly. And your dog likes it toasty. Using Sienna's available best-in-class four-zone climate control system<sup>9</sup>, you can set the temperature for each zone so everyone can keep their cool.



Platinum interior shown in Noble Brown leather trim.

## Entertainment center

On road trips or campouts, passengers can watch their favorite shows in the back with Sienna's available 1080p HD rear-seat entertainment center.



Platinum interior shown in Noble Brown leather trim.

## Heated and ventilated seats

Sienna's available heated and ventilated front seats and heated rear captain's chairs bring enhanced comfort — no matter the season.

See numbered footnotes in Disclosures section.

CONVENIENCE

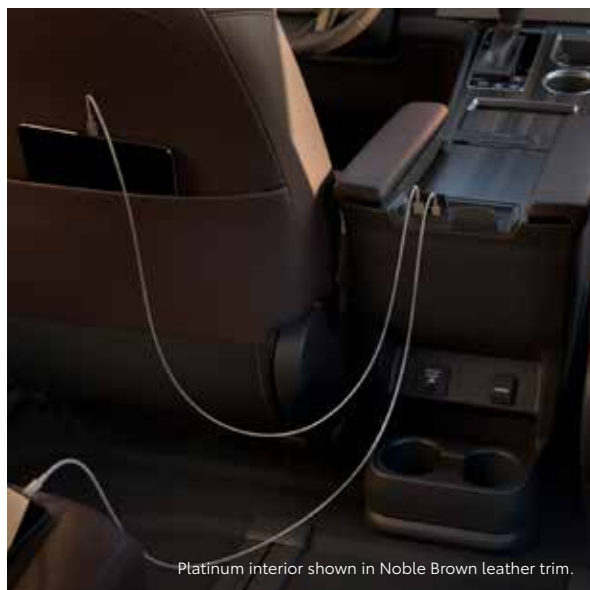
# A real people pleaser.

In a rush and not sure if you've locked the car's doors? Well, with Sienna's available Remote Connect,<sup>10</sup> you can use your compatible smart device to check. Along with a host of other capabilities, like remote vehicle start, Sienna helps keep you in control.



## Front and Rear Parking Assist with Automatic Braking

Up your parking game. When pulling in or backing out of a tight space, Sienna's available Front and Rear Parking Assist with Automatic Braking (PA w/AB)<sup>12</sup> sends you audio and visual notifications, helping you park under pressure — without breaking a sweat.



## Seven USB ports

Passengers can freely use their phones and tablets without worrying about their battery levels by connecting to one of the seven USB ports found across all three rows!<sup>11</sup>



## Split & Stow 3rd Row<sup>®</sup> seat

Make room for more friends, more stuff or both. Sienna's 60/40 One-Motion-Stow Split & Stow 3rd Row<sup>®</sup> seat easily folds down so you can configure the space in the back to meet the day's needs.



# Technology that keeps up with you.

Take advantage of smart and convenient technologies designed to simplify your everyday life. Trial periods are available on select models for the listed connected services. Subscriptions required after trial.\*<sup>13</sup>  
4G network dependent.



## Toyota App

With active applicable Connected Services<sup>13</sup> subscriptions, the Toyota app<sup>14</sup> allows you to stay connected to your Sienna wherever you go. Available for Apple<sup>®15</sup> and Android<sup>™16</sup> devices.

- ✓ Remote Vehicle Start<sup>10</sup> and Lock/Unlock Doors
- ✓ Check Up on Your Toyota's Health
- ✓ Schedule a Service Appointment
- ✓ Shop for Genuine Toyota Parts and Accessories
- ✓ Make a Payment With Your TFS Account



## Safety Connect<sup>®</sup>

Round-the-clock help when the unexpected happens.<sup>17</sup>

- ✓ Emergency Assistance Button (SOS)
- ✓ Enhanced Roadside Assistance<sup>18</sup>
- ✓ Automatic Collision Notification
- ✓ Stolen Vehicle Locator<sup>19</sup>



## Service Connect

Being proactive to help keep your vehicle in peak condition.<sup>20</sup>

- ✓ Vehicle Health Report
- ✓ Vehicle Maintenance Alert
- ✓ Maintenance Reminder



## Wi-Fi Connect

Turn your Toyota into a hotspot with 4G connectivity.<sup>21</sup>

- ✓ AT&T Hotspot



## Dynamic Navigation

Dynamic Navigation<sup>22</sup> provides you with the most up-to-date map data, routes and points of interest (POIs) on your vehicle's factory-installed navigation system, through real-time updates downloaded from the Cloud.

- ✓ Dynamic Map
- ✓ Dynamic Route
- ✓ Dynamic POI



## Destination Assist

Destination Assist<sup>23</sup> provides drivers 24-hour access to a live agent who can provide directions through the vehicle's factory-installed navigation system to an address or point of interest.



## Remote Connect

Manage your vehicle through the Toyota app<sup>14</sup>, including Remote Start and much more!<sup>10</sup>

- ✓ Remote Vehicle Start
- ✓ Unlock/Lock
- ✓ Remote Notifications
- ✓ Guest Driver
- ✓ Smartwatch Compatibility<sup>24</sup>
- ✓ Amazon Alexa<sup>25</sup> and Google Assistant<sup>™</sup>-Enabled<sup>26</sup> Device Capability

\*To view included trial details, please visit [toyota.com/connected-services](http://toyota.com/connected-services).



XSE interior shown in Moonstone with Gray Flannel SofTex<sup>®39</sup> trim and XSE Plus Package.

## AUDIO MULTIMEDIA

# Entertainment for every day.

Play music, make calls, send messages and more from Sienna's 9-in. touchscreen audio multimedia display. And available Dynamic Navigation<sup>22</sup> shows you turn-by-turn directions right before your eyes, while its available Premium JBL<sup>®27</sup> Audio system plays your favorite albums and podcasts with enhanced sound quality.



## Apple CarPlay<sup>®</sup>

With Sienna's Apple CarPlay<sup>®1</sup> compatibility standard, you can use your compatible iPhone<sup>28</sup> with the multimedia system to get directions, make calls, send and receive messages, and listen to music, all while staying focused behind the wheel.



## Android Auto<sup>™</sup>

Stay connected on the road. By pairing your compatible Android<sup>™29</sup> phone with the audio multimedia system, Android Auto<sup>™2</sup> lets you get real-time traffic alerts, make and receive phone calls, listen to your favorite soundtrack and more.



## SiriusXM<sup>®</sup> w/3-month Platinum Plan trial subscription

SiriusXM<sup>®30</sup> has premium entertainment that you won't hear anywhere else. With the Platinum Plan 3-month trial,<sup>31</sup> you get you get 425+ channels, including 165+ channels in your vehicle, to enjoy ad-free music, plus sports, news, talk, comedy and more.



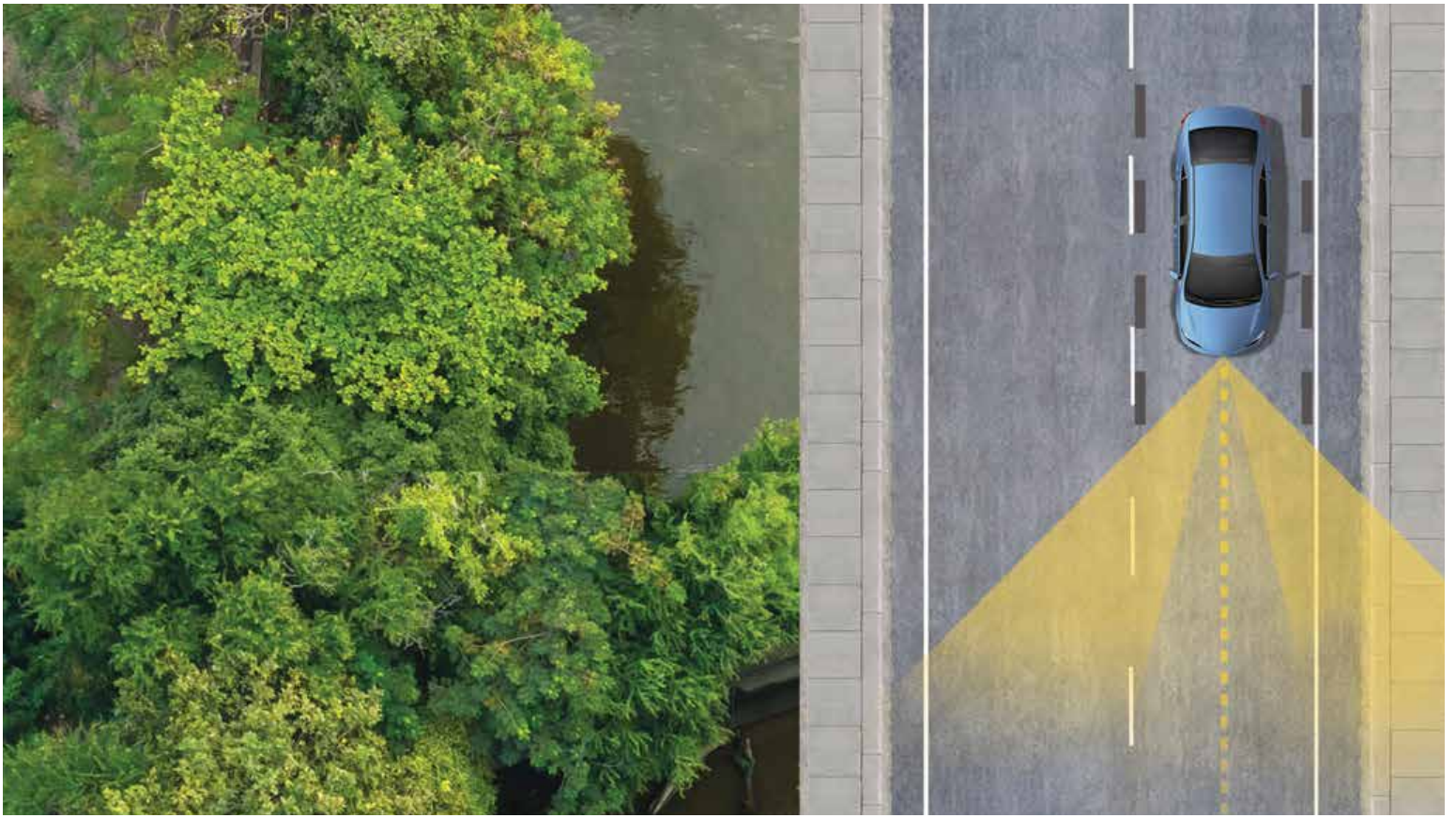
## Amazon Alexa

Almost anywhere the road takes you, Amazon Alexa<sup>25</sup> connectivity follows. With a smartphone connection and the Toyota+Alexa app, all you have to do is ask Alexa to play music, listen to audiobooks, hear the news, check weather, control smart-home devices and more.



## JBL<sup>®</sup> Audio System

Experience the clear sound of Sienna's available JBL<sup>®27</sup> premium audio system. With its 1200 watts, 11 speakers, surround sound and high-quality engineering, phenomenal sound is delivered to amp up every drive.



TOYOTA SAFETY SENSE™ 2.0 (TSS 2.0)

# Peace of mind comes standard.

Toyota Safety Sense™ 2.0 (TSS 2.0)<sup>32</sup> is a bundle of active safety features included on many new Toyota vehicles at no additional cost. These innovative features were designed to help protect you and your passengers from harm.



Pre-Collision System with Pedestrian Detection<sup>33</sup>



Full-Speed Range Dynamic Radar Cruise Control<sup>34</sup>



Lane Departure Alert with Steering Assist<sup>35</sup>



Automatic High Beams<sup>36</sup>



Lane Tracing Assist<sup>37</sup>



Road Sign Assist<sup>38</sup>

## SIENNA MODELS



### LE

Includes these key features

#### Mechanical/Performance

- ✓ Hybrid engine: 2.5L 4-cylinder with 245 net hp
- ✓ Electronically controlled Continuously Variable Transmission (ECVT) with sequential shift mode
- ✓ Normal, Eco, EV<sup>40</sup> and Sport drive modes
- ✓ Front-Wheel Drive (FWD)
- ✓ Available All-Wheel Drive (AWD)
- ✓ Up to 36 city/36 highway/36 combined EPA-est. mpg<sup>8</sup>

#### Exterior Features

- ✓ LED headlights and LED DRL with auto on/off feature
- ✓ LED taillights and stop lights
- ✓ Color-keyed heated power outside mirrors
- ✓ Dual power sliding side doors
- ✓ 17-in. alloy wheels
- ✓ Privacy glass on rear windows
- ✓ Color-keyed rear spoiler

#### Interior Features

- ✓ Seating for eight
- ✓ Three-zone automatic climate control
- ✓ Fabric-trimmed seats
  - Second-row bench with stowable center seat
  - 60/40 One-Motion-Stow Split & Stow 3rd Row<sup>®</sup> seat
- ✓ 4.2-in. Multi-Information Display (MID)
- ✓ Remote keyless entry system with Push Button Start
- ✓ Manual second-row sunshades
- ✓ Seven USB ports<sup>11</sup>
- ✓ Electric Parking Brake (EPB)<sup>46</sup> with Brake Hold<sup>47</sup> function
- ✓ Rear-seat reminder

#### Audio Multimedia

- ✓ Audio includes:
  - 9-in. touchscreen and six speakers
  - Android Auto<sup>™2</sup> & Apple CarPlay<sup>®1</sup> compatible
  - SiriusXM<sup>®30</sup> with 3-month Platinum Plan trial subscription<sup>31</sup>
- ✓ Connected Services<sup>13</sup> Safety Connect<sup>®</sup> trial<sup>17</sup> (Dependent on 4G network.)

#### Safety Features

- ✓ Toyota Safety Sense<sup>™</sup> 2.0 (TSS 2.0)<sup>32</sup>
- ✓ Star Safety System<sup>™</sup>
- ✓ Ten airbags<sup>41</sup>
- ✓ Blind Spot Monitor (BSM)<sup>42</sup> with Rear Cross-Traffic Alert (RCTA)<sup>43</sup>

#### Package

- ✓ LE Plus Package includes:
  - Auto-dimming rearview mirror
  - Wireless charging<sup>45</sup> surface
  - Power tilt/slide moonroof with sunshade
  - Black roof rails
  - Audio Plus multimedia system



### XLE

Adds to or replaces features offered on LE

#### Mechanical/Performance

- ✓ Available All-Wheel Drive (AWD)
- ✓ Up to 36 city/36 highway/36 combined EPA-est. mpg<sup>8</sup>

#### Exterior Features

- ✓ Integrated wide-angle LED fog lights
- ✓ Hands-free dual power sliding side doors<sup>6</sup>
- ✓ Power liftgate with jam protection with available hands-free feature<sup>9</sup>
- ✓ Chrome-accented color-keyed outside door handles
- ✓ Power tilt/slide moonroof with sunshade
- ✓ Front and Rear Parking Assist with Automatic Braking (PA w/AB)<sup>12</sup>

#### Interior Features

- ✓ Seating for up to eight
- ✓ Four-zone automatic climate control
- ✓ SofTex<sup>®</sup>-trimmed<sup>39</sup> seats
  - Heated front seats
  - Second-row captain's chairs with super-long-slide feature
  - Available second-row bench with stowable center seat
  - 60/40 One-Motion-Stow Split & Stow 3rd Row<sup>®</sup> seat
- ✓ Leather-trimmed tilt/telescopic steering wheel
- ✓ Smart Key System with Push Button Start

#### Audio Multimedia

- ✓ Audio Plus includes:
  - 9-in. touchscreen and eight speakers
  - Android Auto<sup>™2</sup> & Apple CarPlay<sup>®1</sup> compatible
  - SiriusXM<sup>®30</sup> with 3-month Platinum Plan trial subscription<sup>31</sup>
- ✓ Connected Services<sup>13</sup> Safety Connect<sup>®</sup> trial<sup>17</sup> (Dependent on 4G network.)

#### Safety Features

- ✓ Toyota Safety Sense<sup>™</sup> 2.0 (TSS 2.0)<sup>32</sup>
- ✓ Star Safety System<sup>™</sup>
- ✓ Ten airbags<sup>41</sup>
- ✓ Blind Spot Monitor (BSM)<sup>42</sup> with Rear Cross-Traffic Alert (RCTA)<sup>43</sup>

#### Packages/Options

- ✓ XLE Plus Package includes:
  - Wireless charging<sup>45</sup> surface
  - Black roof rails
  - Premium Audio, Dynamic Navigation with 3-year trial<sup>22</sup>
  - 12 JBL<sup>®27</sup> speakers including subwoofer and amplifier
- ✓ 1500W power outlet<sup>7</sup> (requires XLE Plus Package)
- ✓ Entertainment Package (requires XLE Plus Package)
- ✓ 18-in. bright wheels



### XSE

Adds to or replaces features offered on XLE

#### Mechanical/Performance

- ✓ Sport-tuned suspension
- ✓ Available All-Wheel Drive (AWD)
- ✓ Up to 36 city/36 highway/36 combined EPA-est. mpg<sup>8</sup>

#### Exterior Features

- ✓ LED headlights and LED-strip DRL with auto on/off feature
- ✓ Black side rocker panels
- ✓ Metallic black sport mesh front grille
- ✓ Black heated power outside mirrors
- ✓ Available 20-in. dark wheels
- ✓ Rear lower bumper in black sport mesh
- ✓ Black Sienna liftgate logo
- ✓ Black roof-mounted shark-fin antenna

#### Interior Features

- ✓ Seating for seven
- ✓ Driver Easy Speak
- ✓ SofTex<sup>®39</sup> sport-trimmed seats
  - Heated front seats
  - Second-row captain's chairs with super-long-slide feature
  - 60/40 One-Motion-Stow Split & Stow 3rd Row<sup>®</sup> seat

#### Audio Multimedia

- ✓ Premium Audio includes:
  - 9-in. touchscreen and eight speakers
  - Dynamic Navigation with 3-year trial<sup>22</sup>
  - Android Auto<sup>™2</sup> & Apple CarPlay<sup>®1</sup> compatible
  - SiriusXM<sup>®30</sup> with 3-month Platinum Plan trial subscription<sup>31</sup>
- ✓ Connected Services<sup>13</sup> Safety Connect<sup>®</sup> trial<sup>17</sup> (Dependent on 4G network.)

#### Safety Features

- ✓ Toyota Safety Sense<sup>™</sup> 2.0 (TSS 2.0)<sup>32</sup>
- ✓ Star Safety System<sup>™</sup>
- ✓ Ten airbags<sup>41</sup>
- ✓ Blind Spot Monitor (BSM)<sup>42</sup> with Rear Cross-Traffic Alert (RCTA)<sup>43</sup>

#### Packages/Options

- ✓ XSE Plus Package includes:
  - Wireless charging<sup>45</sup> surface
  - Black roof rails
  - Premium Audio with 12 JBL<sup>®27</sup> speakers including subwoofer and amplifier
- ✓ 1500W power outlet<sup>7</sup> (requires XLE Plus Package)
- ✓ Entertainment Package (requires XLE Plus Package)

## SIENNA MODELS



### 25th Anniversary Special Edition

Adds to or replaces features offered on XSE

#### Mechanical/Performance

- ✓ Sport-tuned suspension
- ✓ Available All-Wheel Drive (AWD)
- ✓ Up to 36 city/36 highway/36 combined EPA-est. mpg<sup>8</sup>

#### Exterior Features

- ✓ LED headlights and LED-strip DRL with auto on/off feature
- ✓ Black side rocker panels
- ✓ Metallic black sport mesh front grille
- ✓ Black heated power outside mirrors
- ✓ Available 20-in. dark wheels
- ✓ Rear lower bumper in black sport mesh
- ✓ 25th Anniversary Edition rear badge
- ✓ Black roof-mounted shark-fin antenna

#### Interior Features

- ✓ Seating for seven
- ✓ Driver Easy Speak
- ✓ Premium leather-trimmed seats
  - Second-row captain's chairs with super-long-slide feature
  - SofTex<sup>®</sup>-trimmed<sup>39</sup> 60/40 One-Motion-Stow Split & Stow 3rd Row<sup>®</sup> seat
- ✓ Leather-trimmed power tilt/telescopic steering wheel

#### Audio Multimedia

- ✓ Premium Audio includes:
  - 9-in. touchscreen and eight speakers
  - Dynamic Navigation with 3-year trial<sup>22</sup>
  - Android Auto<sup>™2</sup> & Apple CarPlay<sup>®1</sup> compatible
  - SiriusXM<sup>®30</sup> with 3-month Platinum Plan trial subscription<sup>31</sup>
- ✓ Connected Services<sup>13</sup> Safety Connect<sup>®</sup> trial<sup>17</sup> (Dependent on 4G network.)

#### Safety Features

- ✓ Toyota Safety Sense<sup>™</sup> 2.0 (TSS 2.0)<sup>32</sup>
- ✓ Star Safety System<sup>™</sup>
- ✓ Ten airbags<sup>41</sup>
- ✓ Blind Spot Monitor (BSM)<sup>42</sup> with Rear Cross-Traffic Alert (RCTA)<sup>43</sup>

#### Packages/Options

- ✓ 1500W power outlet<sup>7</sup> (requires XLE Plus Package)
- ✓ Entertainment Package (requires XLE Plus Package)



### Limited

Adds to or replaces features offered on XLE

#### Mechanical/Performance

- ✓ Available All-Wheel Drive (AWD)
- ✓ Up to 36 city/36 highway/36 combined EPA-est. mpg<sup>8</sup>

#### Exterior Features

- ✓ LED headlights and LED-strip DRL with auto on/off feature
- ✓ Panoramic View Monitor<sup>44</sup>
- ✓ Dark gray metallic front grille
- ✓ 18-in. bright wheels
- ✓ Chrome roof rails
- ✓ Rear lower bumper in black with chrome accent
- ✓ Chrome-accented Sienna liftgate logo
- ✓ Color-keyed roof-mounted shark-fin antenna

#### Interior Features

- ✓ Seating for seven
- ✓ Driver Easy Speak
- ✓ Wireless charging<sup>45</sup> surface
- ✓ Leather-trimmed seats
  - Heated front seats
  - Second-row captain's chairs with super-long-slide feature and ottomans<sup>4</sup>
  - SofTex<sup>®</sup>-trimmed<sup>39</sup> 60/40 One-Motion-Stow Split & Stow 3rd Row<sup>®</sup> seat
- ✓ Leather-trimmed power tilt/telescopic steering wheel
- ✓ 7-in. Multi-Information Display (MID)
- ✓ Manual second- and third-row sunshades

#### Audio Multimedia

- ✓ Premium Audio includes:
  - 9-in. touchscreen and 12 JBL<sup>®27</sup> speakers including subwoofer and amplifier
  - Dynamic Navigation with 3-year trial<sup>22</sup>
  - Android Auto<sup>™2</sup> & Apple CarPlay<sup>®1</sup> compatible
  - SiriusXM<sup>®30</sup> with 3-month Platinum Plan trial subscription<sup>31</sup>
- ✓ Connected Services<sup>13</sup> Safety Connect<sup>®</sup> trial<sup>17</sup> (Dependent on 4G network.)

#### Safety Features

- ✓ Toyota Safety Sense<sup>™</sup> 2.0 (TSS 2.0)<sup>32</sup>
- ✓ Star Safety System<sup>™</sup>
- ✓ Ten airbags<sup>41</sup>
- ✓ Blind Spot Monitor (BSM)<sup>42</sup> with Rear Cross-Traffic Alert (RCTA)<sup>43</sup>

#### Packages/Options

- ✓ 1500W power outlet<sup>7</sup>
- ✓ Entertainment Package



### Platinum

Adds to or replaces features offered on Limited

#### Mechanical/Performance

- ✓ Available All-Wheel Drive (AWD)
- ✓ Up to 36 city/36 highway/36 combined EPA-est. mpg<sup>8</sup>

#### Exterior Features

- ✓ Signature Bi-LED projector headlights and LED-strip DRL with auto on/off feature
- ✓ Panoramic View Monitor (PVM)<sup>44</sup>
- ✓ Available 20-in. metallic wheels
- ✓ Rain-sensing variable windshield wipers

#### Interior Features

- ✓ Seating for seven
- ✓ Leather-trimmed seats
  - Heated and ventilated front seats
  - Heated second-row captain's chairs with super-long-slide feature and ottomans<sup>4</sup>
  - SofTex<sup>®</sup>-trimmed<sup>39</sup> 60/40 One-Motion-Stow Split & Stow 3rd Row<sup>®</sup> seat
- ✓ Leather-trimmed heated power tilt/telescopic steering wheel
- ✓ 10-in. color Head-Up Display (HUD)

#### Audio Multimedia

- ✓ Premium Audio includes:
  - 9-in. touchscreen and 12 JBL<sup>®27</sup> speakers including subwoofer and amplifier
  - Dynamic Navigation with 3-year trial<sup>22</sup>
  - Android Auto<sup>™2</sup> & Apple CarPlay<sup>®1</sup> compatible
  - SiriusXM<sup>®30</sup> with 3-month Platinum Plan trial subscription<sup>31</sup>
- ✓ Connected Services<sup>13</sup> Safety Connect<sup>®</sup> trial<sup>17</sup> (Dependent on 4G network.)

#### Safety Features

- ✓ Toyota Safety Sense<sup>™</sup> 2.0 (TSS 2.0)<sup>32</sup>
- ✓ Star Safety System<sup>™</sup>
- ✓ Ten airbags<sup>41</sup>
- ✓ Blind Spot Monitor (BSM)<sup>42</sup> with Rear Cross-Traffic Alert (RCTA)<sup>43</sup>

#### Packages/Options

- ✓ 1500W power outlet<sup>7</sup>
- ✓ Entertainment Package

SIENNA COLORS



Midnight Black Metallic



Blueprint



Cypress



Ruby Flare Pearl<sup>50</sup>



Sunset Bronze Mica



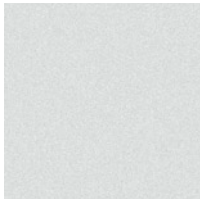
Predawn Gray Mica



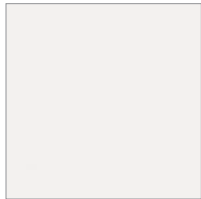
Cement



Celestial Silver Metallic



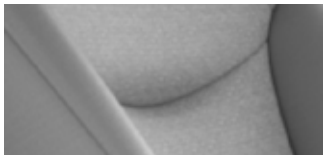
Wind Chill Pearl<sup>50</sup>



Ice Cap

SIENNA TRIMS

LE fabric shown in Gray



XLE SofTex<sup>®39</sup> trim shown in Chateau



XSE SofTex<sup>®39</sup> trim shown in Moonstone with Gray Flannel



Graphite



Gray Flannel with Black

25th Anniversary Special Edition perforated leather trim shown in Black



Limited perforated leather trim shown in Chateau



Platinum perforated leather trim shown in Noble Brown



Graphite

SIENNA WHEELS



LE and XLE  
17-in. alloy wheels



XSE FWD and 25th Anniversary  
Special Edition FWD  
20-in. dark wheels



XSE AWD, 25th Anniversary  
Special Edition AWD and Platinum AWD  
18-in. metallic wheels



Platinum FWD  
20-in. metallic wheels



XLE and Limited  
18-in. bright wheels

## SIENNA ACCESSORIES

This is a great way to add extra personality to your Sienna. Not every accessory is available in your area, so for a complete list of accessories, go to [toyota.com/sienna/accessories](http://toyota.com/sienna/accessories).



All-weather floor liner<sup>5</sup>



Body side moldings



Cargo liner<sup>64</sup>



Cargo organizer<sup>64</sup>



Cargo tray<sup>64</sup>



Cross bars<sup>66</sup>



Illuminated doorsills



Tow hitch<sup>48,49</sup>



Dashcam<sup>67</sup>

## WARRANTIES

Every Toyota Car, Truck and SUV is built to exceptional standards. And that's not idle boasting. We back it up with these Limited Warranty Coverages:

**Basic:** 36 months/36,000 miles (all components other than normal wear and maintenance items).

**Hybrid-Related Component Coverage:** Hybrid-related components, including the battery control module, hybrid control module and inverter with converter, are covered for 8 years/100,000 miles. Refer to applicable *Warranty and Maintenance Guide* for details.

**Hybrid Battery:** HV battery is covered for 10 years or 150,000 miles, whichever comes first. Warranty coverage is subject to terms and conditions. Refer to applicable *Warranty and Maintenance Guide* for details.

**Powertrain:** 60 months/60,000 miles (engine, transmission/transaxle, drive system, seatbelts and airbags).

**Rust-Through:** 60 months/unlimited miles (corrosion perforation of sheet metal).

**Emissions:** Coverages vary under Federal and California regulations. Refer to applicable *Warranty and Maintenance Guide* for details.

**Accessories:** For Genuine Toyota Accessories purchased at the time of the new vehicle purchase, the Toyota Accessory Warranty coverage is in effect for 36 months/36,000 miles from the vehicle's in-service date, which is the same coverage as the Toyota New Vehicle Limited Warranty.

For Genuine Toyota Accessories purchased after the new vehicle purchase the coverage is 12 months, regardless of mileage, from the date the accessory was installed on the vehicle, or the remainder of any applicable new vehicle warranty, whichever provides greater coverage.

You may be eligible for transportation assistance if it's necessary that your vehicle be kept overnight for repairs covered under warranty. Please see your authorized Toyota dealership for further details.

For complete details about Toyota's warranties, please visit [www.toyota.com](http://www.toyota.com), refer to the applicable *Warranty and Maintenance Guide* or see your Toyota dealer.



SIENNA FEATURES<sup>51</sup>

S = Standard O = Optional A = Available P = Available as part of a package

Exterior	LE	XLE	XSE	25th Anniversary Special Edition	Limited	Platinum
LED headlights and LED Daytime Running Lights (DRL) with auto on/off feature	S	S				
LED headlights and LED-strip DRL with auto on/off feature			S	S	S	
Signature Bi-LED projector headlights and LED-strip Daytime Running Lights (DRL) with auto on/off feature						S
Integrated wide-angle LED fog lights		S	S	S	S	S
LED taillights and stop lights	S	S				
Premium LED taillights and stop lights			S	S	S	S
Black side rocker panels			S	S	S	S
Black grille	S	S				
Dark gray metallic grille					S	S
Metallic black sport mesh front grille			S	S		
Color-keyed heated power outside mirrors with blind spot warning indicators <sup>42</sup>	S	S				
Black heated power outside mirrors with blind spot warning indicators <sup>42</sup>			S	S		
Color-keyed heated power auto-dimming outside mirrors with blind spot warning indicators; <sup>42</sup> puddle lights and power-folding, reverse tilt-down and memory features					S	
Color-keyed heated power auto-dimming outside mirrors with blind spot warning indicators; <sup>42</sup> puddle lights and power-folding, reverse tilt-down, memory and Panoramic View Monitor (PVM) <sup>44</sup> features						S
Dual power sliding side doors	S					
Hands-free dual power sliding side doors <sup>6</sup>		S	S	S	S	S
Power liftgate with jam protection <sup>6</sup>		S	S	S	S	S
Hands-free power liftgate with jam protection <sup>6</sup>		A	A	A	A	A
Color-keyed outside door handles	S					
Chrome-accented color-keyed outside door handles		S	S	S	S	S
Power tilt/slide moonroof with sunshade	P	S	S	S	S	S
17-in. alloy wheels with P235/65R17 tires	S	S				
18-in. metallic wheels with P235/60R18 tires (AWD)			S	S		S
18-in. bright wheels with P235/60R18 tires		O			S	
20-in. dark wheels with P235/50R20 tires (FWD)			S	S		
20-in. metallic wheels with P235/50R20 tires (FWD)						S
Variable windshield wipers	S	S	S	S	S	
Rain-sensing variable windshield wipers						S
Intermittent rear wiper	S	S	S	S	S	S
Black roof rails	P	P	P	S		
Chrome roof rails					S	S
Rear lower bumper in black	S	S				
Rear lower bumper in black sport mesh			S	S		
Rear lower bumper in black with chrome accent					S	S
Color-keyed rear spoiler with LED center high-mount stop light and integrated concealed intermittent rear wiper	S	S	S	S	S	S
Black Sienna logo liftgate license garnish	S	S	S			
Chrome-accented Sienna logo liftgate license garnish					S	S
Chrome Toyota emblem and grade badge	S	S	S		S	S
Chrome AWD badge (AWD)	S	S	S		S	S
Black AWD badge				S		
25th Anniversary rear badge				S		
Black roof-mounted shark-fin antenna	S	S	S	S		
Color-keyed roof-mounted shark-fin antenna					S	S

Interior

Three-zone automatic climate control with air filter, individual temperature settings for driver, front passenger and rear-seat passengers, and separate rear digital control panel	S					
Four-zone automatic climate control with air filter, individual temperature settings for driver, front passenger and rear-seat passengers, and separate rear digital control panel		S	S	S	S	S
Integrated backup camera <sup>52</sup>	S	S	S	S	S	S
Panoramic View Monitor (PVM) <sup>44</sup> with 360-degree Overhead View in low-speed drive and reverse, and Curb View						S
Driver Easy Speak		P	S	S	S	S
1080p HD Entertainment Center with 11.6-in. display, HDMI inputs, remote and two wireless headphones <sup>53</sup>		P	P	P	P	P
Qi-compatible wireless smartphone charging <sup>45</sup>	P	P	P	P	S	S
1500W inverter (with two 120V AC outlets) <sup>7</sup>		P	P	O	O	O

See numbered footnotes in Disclosures section.

SIENNA FEATURES

S = Standard O = Optional A = Available P = Available as part of a package

Interior (continued)	LE	XLE	XSE	25th Anniversary Special Edition	Limited	Platinum
Fabric-trimmed front seats with seatback pockets; 8-way power-adjustable driver's seat	S					
SofTex®-trimmed <sup>39</sup> heated front seats with seatback pockets; 8-way power-adjustable driver's seat with power lumbar; 4-way power-adjustable front passenger seat		S				
SofTex® <sup>39</sup> sport-trimmed heated front seats with seatback pockets; 8-way power-adjustable driver's seat with power lumbar; 4-way power-adjustable front passenger seat			S			
Leather-trimmed heated and ventilated front seats with seatback pockets; 8-way power-adjustable driver's seat with power lumbar and driver memory function; 4-way power-adjustable front passenger seat				S	S	S
8-passenger seating with fabric-trimmed second-row bench with stowable center seat	S					
8-passenger seating with SofTex®-trimmed <sup>39</sup> second-row bench with stowable center seat (FWD)		S				
7-passenger seating with SofTex®-trimmed <sup>39</sup> second-row captain's chairs with super-long-slide feature (FWD/AWD)		S				
7-passenger seating with SofTex® <sup>39</sup> sport-trimmed second-row captain's chairs with super-long-slide feature			S			
7-passenger seating with premium leather-trimmed second-row-seat captain's chairs with super-long-slide feature and ottomans <sup>4</sup>				S	S	
7-passenger seating with heated premium leather-trimmed second-row-seat captain's chairs with super-long-slide feature and ottomans <sup>4</sup>						S
Fabric-trimmed 60/40 One-Motion-Stow Split & Stow 3rd Row <sup>8</sup> seat	S					
SofTex®-trimmed <sup>39</sup> 60/40 One-Motion-Stow Split & Stow 3rd Row <sup>8</sup> seat		S			S	S
SofTex® <sup>39</sup> sport-trimmed 60/40 One-Motion-Stow Split & Stow 3rd Row <sup>8</sup> seat			S	S		
Tilt/telescopic steering wheel with audio, Multi-Information Display (MID), Bluetooth® <sup>54</sup> hands-free phone and voice-command, Full-Speed Range Dynamic Radar Cruise Control (DRCC); <sup>34</sup> Lane Departure Alert (LDA) <sup>35</sup> and Lane Tracing Assist (LTA) <sup>37</sup> controls	S					
Leather-trimmed tilt/telescopic steering wheel with audio, Multi-Information Display (MID), Bluetooth® <sup>54</sup> hands-free phone and voice-command, Full-Speed Range Dynamic Radar Cruise Control (DRCC); <sup>34</sup> Lane Departure Alert (LDA) <sup>35</sup> and Lane Tracing Assist (LTA) <sup>37</sup> controls		S	S			
Leather-trimmed tilt/telescopic steering wheel with memory and with audio, Multi-Information Display (MID), Bluetooth® <sup>54</sup> hands-free phone and voice-command, Full-Speed Range Dynamic Radar Cruise Control (DRCC); <sup>34</sup> Lane Departure Alert (LDA) <sup>35</sup> and Lane Tracing Assist (LTA) <sup>37</sup> controls				S	S	
Leather-trimmed, heated, tilt/telescopic steering wheel with memory and with audio, Multi-Information Display (MID), Bluetooth® <sup>54</sup> hands-free phone and voice-command, Full-Speed Range Dynamic Radar Cruise Control (DRCC); <sup>34</sup> Lane Departure Alert (LDA) <sup>35</sup> and Lane Tracing Assist (LTA) <sup>37</sup> controls						S
4.2-in. color TFT Multi-Information Display (MID) with odometer, fuel economy, trip information and warning messages	S	S	S	S		
7-in. Multi-Information Display (MID) with odometer, fuel economy, trip information and warning messages					S	S
Remote keyless entry system with lock, unlock, panic and Push Button Start	S					
Smart Key System on five doors with Push Button Start and remote illuminated entry		S	S		S	S
Power windows with one-touch auto up/down, jam protection in all positions	S	S	S	S	S	S
Rear window defogger with timer	S	S	S	S	S	S
Power door locks with shift-activated locking feature and anti-lockout feature	S	S	S	S	S	S
Manual second-row sunshades	S	S	S	S		
Manual second- and third-row sunshades					S	S
Non-glare rearview mirror	S					
Auto-dimming rearview mirror and HomeLink® <sup>55</sup> universal transceiver	P	S	S	S	S	S
10-in. color Head-Up Display (HUD) with speedometer, navigation and Hybrid System Indicator						S
Overhead console with maplights and dome lights, side door controls and Safety Connect® <sup>17</sup>	S					
Overhead console with maplights and dome lights, side door and liftgate controls, conversation mirror, sunglasses storage and Safety Connect® <sup>17</sup>		S	S	S	S	S
Fixed center console with wood-grain-style accents, pass-through, illuminated storage compartment and four illuminated cup holders	S	S			S	S
Fixed center console with satin-grain-style accents, pass-through, illuminated storage compartment and four illuminated cup holders			S	S		
25th Anniversary floor mats <sup>5</sup>				S		
Lockable glove compartment	S	S	S	S	S	S
One 12V <sup>56</sup> DC outlet (under bridge console)	S	S	S	S	S	S
One USB port and six USB charge ports <sup>11</sup>	S	S	S	S	S	S
Retractable assist grips at all outboard seating positions	S	S	S	S	S	S

See numbered footnotes in Disclosures section.

SIENNA FEATURES

S = Standard O = Optional A = Available P = Available as part of a package

Interior (continued)	LE	XLE	XSE	25th Anniversary Special Edition	Limited	Platinum
Dual sun visors with illuminated vanity mirrors	S	S	S	S	S	S
Up to 18 cup and bottle holders	S	S	S	S	S	S
Front- and rear-door map pockets with bottle holders	S	S	S	S	S	S
Electric Parking Brake (EPB) <sup>46</sup> with Brake Hold <sup>47</sup> function	S	S	S	S	S	S

Audio Multimedia

Audio — 9-in. touchscreen, six speakers, Android Auto<sup>TM2</sup> & Apple CarPlay<sup>®1</sup> & Amazon Alexa<sup>25</sup> compatible, seven USB ports,<sup>11</sup> hands-free phone capability and music streaming<sup>54</sup> via Bluetooth<sup>®54</sup> wireless technology, SiriusXM<sup>®30</sup> with 3-month Platinum Plan trial subscription<sup>31</sup> See [toyota.com/audio-multimedia](http://toyota.com/audio-multimedia) for details. Connected Services<sup>13</sup> — Safety Connect<sup>®</sup> with 1-year trial,<sup>17</sup> Wi-Fi Connect with up to 2 GB within 3-month trial.<sup>21</sup> See [toyota.com/connected-services](http://toyota.com/connected-services) for details. (Dependent on 4G network.)

S

Audio Plus — 9-in. touchscreen, eight speakers, Android Auto<sup>TM2</sup> & Apple CarPlay<sup>®1</sup> & Amazon Alexa<sup>25</sup> compatible, seven USB ports,<sup>11</sup> hands-free phone capability and music streaming<sup>54</sup> via Bluetooth<sup>®54</sup> wireless technology, SiriusXM<sup>®30</sup> with 3-month Platinum Plan trial subscription<sup>31</sup> See [toyota.com/audio-multimedia](http://toyota.com/audio-multimedia) for details. Connected Services<sup>13</sup> — Safety Connect<sup>®</sup> with 1-year trial,<sup>17</sup> Service Connect with 10-year trial,<sup>20</sup> Remote Connect with 1-year trial,<sup>10</sup> Wi-Fi Connect with up to 2 GB within 3-month trial.<sup>21</sup> See [toyota.com/connected-services](http://toyota.com/connected-services) for details. (Dependent on 4G network.)

P

S

Premium Audio and Dynamic Navigation with 3-year trial<sup>22</sup> — 9-in. touchscreen, eight speakers, Android Auto<sup>TM2</sup> & Apple CarPlay<sup>®1</sup> & Amazon Alexa<sup>25</sup> compatible, seven USB ports,<sup>11</sup> hands-free phone capability and music streaming<sup>54</sup> via Bluetooth<sup>®54</sup> wireless technology, SiriusXM<sup>®30</sup> with 3-month Platinum Plan trial subscription<sup>31</sup> See [toyota.com/audio-multimedia](http://toyota.com/audio-multimedia) for details. Connected Services<sup>13</sup> — Safety Connect<sup>®</sup> with 1-year trial,<sup>17</sup> Remote Connect with 1-year trial,<sup>10</sup> Service Connect with 10-year trial,<sup>20</sup> Wi-Fi Connect with up to 2 GB within 3-month trial.<sup>21</sup> See [toyota.com/connected-services](http://toyota.com/connected-services) for details. (Dependent on 4G network.)

S

S

Premium Audio and Dynamic Navigation with 3-year trial<sup>22</sup> — 9-in. touchscreen, 12 JBL<sup>®27</sup> speakers, including subwoofer and amplifier, Android Auto<sup>TM2</sup> & Apple CarPlay<sup>®1</sup> & Amazon Alexa<sup>25</sup> compatible, seven USB ports,<sup>11</sup> hands-free phone capability and music streaming<sup>54</sup> via Bluetooth<sup>®54</sup> wireless technology, SiriusXM<sup>®30</sup> with 3-month Platinum Plan trial subscription.<sup>31</sup> See [toyota.com/audio-multimedia](http://toyota.com/audio-multimedia) for details. Connected Services<sup>13</sup> — Safety Connect<sup>®</sup> with 1-year trial,<sup>17</sup> Service Connect with 10-year trial,<sup>20</sup> Remote Connect with 1-year trial,<sup>10</sup> Wi-Fi Connect with up to 2 GB within 3-month trial,<sup>21</sup> Destination Assist with 1-year trial.<sup>23</sup> See [toyota.com/connected-services](http://toyota.com/connected-services) for details. (Dependent on 4G network.)

P

P

P

S

S

Safety and Convenience

**STAR SAFETY SYSTEM** Star Safety System<sup>TM</sup> — includes Enhanced Vehicle Stability Control (VSC)<sup>57</sup> Traction Control (TRAC), Anti-lock Brake System (ABS), Electronic Brake-force Distribution (EBD), Brake Assist (BA)<sup>58</sup> and Smart Stop Technology<sup>®</sup> (SST)<sup>59</sup>

S

S

S

S

S

S

Toyota Safety Sense<sup>TM</sup> 2.0 (TSS 2.0)<sup>32</sup> — Pre-Collision System with Pedestrian Detection (PCS w/PD)<sup>33</sup> Full-Speed Range Dynamic Radar Cruise Control (DRCC),<sup>34</sup> Lane Departure Alert with Steering Assist (LDA w/SA)<sup>35</sup> Automatic High Beams (AHB),<sup>36</sup> Lane Tracing Assist (LTA)<sup>37</sup> and Road Sign Assist (RSA)<sup>38</sup>

S

S

S

S

S

S

Ten airbags<sup>41</sup> — includes driver and front passenger Advanced Airbag System, driver, front passenger and second-row outboard seat-mounted side airbags, driver knee airbag, front passenger seat-cushion airbag, side curtain airbags

S

S

S

S

S

3-point seatbelts for all seating positions; driver-side Emergency Locking Retractor (ELR) and Automatic/Emergency Locking Retractors (ALR/ELR) on all passenger seatbelts

S

S

S

S

S

S

Adjustable seatbelt anchors on front and outboard second-row seats and driver and front passenger seatbelt pretensioners with force limiters

S

S

S

S

S

S

Four LATCH (Lower Anchors and Tethers for CHildren) locations: includes lower anchors on outboard second-row seats, and passenger-side and center third-row seats

S

S

S

S

S

Five LATCH (Lower Anchors and Tethers for CHildren) locations: includes lower anchors on all three second-row seats, and passenger-side and center third-row seats

S

Child-protector rear door locks

S

S

S

S

S

S

Tire Pressure Monitor System (TPMS)<sup>60</sup> with direct pressure readout and individual tire location alert

S

S

S

S

S

S

Safety Connect<sup>®917</sup> — includes Emergency Assistance, Stolen Vehicle Locator,<sup>19</sup> Roadside Assistance<sup>18</sup> and Automatic Collision Notification. Available by subscription. Complimentary one-year trial subscription.<sup>17</sup> (Includes roof-mounted shark-fin antenna)

S

S

S

S

S

S

Front and Rear Parking Assist Sonar with Automatic Braking (PA w/AB)<sup>12</sup>

S

S

S

S

S

Blind Spot Monitor (BSM)<sup>42</sup> with Rear Cross-Traffic Alert (RCTA)<sup>43</sup> with Rear Cross-Traffic Braking (RCTB)

S

S

S

S

S

S

SIENNA PACKAGES

S = Standard O = Optional A = Available P = Available as part of a package

Safety and Convenience (continued)

	LE	XLE	XSE	25th Anniversary Special Edition	Limited	Platinum
Hill Start Assist Control (HAC) <sup>61</sup>	S	S	S	S	S	S
Anti-theft system with alarm and engine immobilizer <sup>62</sup>	S	S	S	S	S	S
Tire repair kit	S	S	S	S	S	S

Packages and Options

**LE Plus Package:** includes auto-dimming rearview mirror and HomeLink<sup>65</sup> universal transceiver, Qi-compatible wireless smartphone charging<sup>45</sup> — power tilt/slide moonroof with sunshade, black roof rails and Audio Plus — includes 9-in. touchscreen, eight speakers, seven USB ports,<sup>11</sup> hands-free phone capability and music streaming<sup>54</sup> via Bluetooth<sup>64</sup> wireless technology, Android Auto<sup>TM2</sup> & Apple CarPlay<sup>81</sup> & Amazon Alexa<sup>25</sup> compatible, SiriusXM<sup>830</sup> with 3-month Platinum Plan trial subscription<sup>31</sup> See [toyota.com/audio-multimedia](http://toyota.com/audio-multimedia) for details. Connected Services<sup>13</sup> — Safety Connect<sup>9</sup> with 1-year trial,<sup>17</sup> Service Connect with 10-year trial,<sup>20</sup> Remote Connect with 1-year trial,<sup>10</sup> Wi-Fi Connect with up to 2 GB within 3-month trial.<sup>21</sup> See [toyota.com/connected-services](http://toyota.com/connected-services) for details.

P

**XLE Plus Package:** includes Qi-compatible wireless smartphone charging<sup>45</sup> black roof rails and Premium Audio, Dynamic Navigation trial<sup>22</sup> and JBL<sup>®</sup> w/Clari-Fi<sup>65</sup> — includes 9-in. touchscreen, 12 JBL<sup>®27</sup> speakers including subwoofer and amplifier, seven USB ports,<sup>11</sup> hands-free phone capability and music streaming<sup>54</sup> via Bluetooth<sup>64</sup> wireless technology, Android Auto<sup>TM2</sup> & Apple CarPlay<sup>81</sup> & Amazon Alexa<sup>25</sup> compatible, SiriusXM<sup>830</sup> with 3-month Platinum Plan trial subscription.<sup>31</sup> See [toyota.com/audio-multimedia](http://toyota.com/audio-multimedia) for details. Connected Services<sup>13</sup> — Safety Connect<sup>9</sup> with 1-year trial,<sup>17</sup> Service Connect with 10-year trial,<sup>20</sup> Remote Connect with 1-year trial,<sup>10</sup> Wi-Fi Connect with up to 2 GB within 3-month trial,<sup>21</sup> Destination Assist with 1-year trial.<sup>23</sup> See [toyota.com/connected-services](http://toyota.com/connected-services) for details.

P

**XSE Plus Package:** includes Qi-compatible wireless smartphone charging<sup>45</sup> black roof rails and Premium Audio, Dynamic Navigation trial<sup>22</sup> and JBL<sup>®</sup> w/Clari-Fi<sup>65</sup> — includes 9-in. touchscreen, 12 speakers including subwoofer and amplifier, seven USB ports,<sup>11</sup> hands-free phone capability and music streaming<sup>54</sup> via Bluetooth<sup>64</sup> wireless technology, Android Auto<sup>TM2</sup> & Apple CarPlay<sup>81</sup> & Amazon Alexa<sup>25</sup> compatible, SiriusXM<sup>830</sup> with 3-month Platinum Plan trial subscription.<sup>31</sup> See [toyota.com/audio-multimedia](http://toyota.com/audio-multimedia) for details. Connected Services<sup>13</sup> — Safety Connect<sup>9</sup> with 1-year trial,<sup>17</sup> Service Connect with 10-year trial,<sup>20</sup> Remote Connect with 1-year trial,<sup>10</sup> Wi-Fi Connect with up to 2 GB within 3-month trial,<sup>21</sup> Destination Assist with 1-year trial.<sup>23</sup> See [toyota.com/connected-services](http://toyota.com/connected-services) for details.

P

S

**Entertainment Package:** includes 1080p HD Entertainment Center with 11.6-in. display, HDMI input, remote and two wireless headphones<sup>53</sup>

P\*

P\*

P

P

P

1500W inverter (with two 120V AC outlets)<sup>7</sup>

O\*

O\*

O

O

O

Spare tire<sup>4</sup>

O

O

O

O

O

O

Roof rails

O

O

O

S

S

S

SIENNA SPECIFICATIONS

\*Requires Plus Package

Mechanical/Performance

ENGINE

Hybrid — 2.5-Liter with Double Overhead Cam (DOHC), 16-Valve, D-4S Injection and Dual VVT-i

S

S

S

S

S

S

245 net hybrid system hp

S

S

S

S

S

S

EMISSION RATING

Super Ultra Low Emission Vehicle (SULEV)<sup>63</sup>

S

S

S

S

S

S

ELECTRIC MOTORS

Permanent magnet synchronous motors (two front) (FWD)

S

S

S

S

S

S

Permanent magnet synchronous motors (two front, one rear) (AWD)

S

S

S

S

S

S

TRACTION BATTERY

Battery type: sealed Nickel-Metal Hydride (Ni-MH)

S

S

S

S

S

S

TRANSMISSION

Electronically controlled Continuously Variable Transmission (ECVT) with sequential shift mode

S

S

S

S

S

S

DRIVETRAIN

Front-Wheel Drive (FWD)

S

S

S

S

S

S

Electronic On-Demand All-Wheel Drive (AWD) system

A

A

A

A

A

A

DRIVE MODES

Normal, Eco, EV<sup>40</sup> Sport

S

S

S

S

S

S

# SIENNA SPECIFICATIONS

S = Standard O = Optional A = Available P = Available as part of a package

	LE	XLE	XSE	25th Anniversary Special Edition	Limited	Platinum
<b>SUSPENSION</b>						
Increased ground clearance						
Sport-tuned suspension			S	S		
<b>STEERING</b>						
Electric Power Steering (EPS)	S	S		S	S	S
Sport-tuned Electric Power Steering (EPS)			S			
Turning circle diameter, curb to curb (ft.)	38.30	38.30	39.20	38.30	38.30	39.20
<b>BRAKES</b>						
Ventilated 12.9-in. front disc brakes	S	S	S	S	S	S
Ventilated 12.5-in. rear disc brakes	S	S	S	S	S	S

## Dimensions

### EXTERIOR DIMENSIONS (in.)

Overall length	203.7	203.7	204.1	204.1	203.7	203.7
Overall width	78.5	78.5	78.5	78.5	78.5	78.5
Overall height, unloaded, with/without roof rails	68.5/69.7	68.5/69.7	68.5/69.7	68.5/69.7	68.5/69.7	68.5/69.7
Wheelbase	120.5	120.5	120.5	120.5	120.5	120.5
Track (front/rear)	67.7/68.5	67.7/68.5	67.7/68.5	67.7/68.5	67.7/68.5	67.7/68.5
Ground clearance	6.37	6.37	6.37	6.37	6.37	6.37
Coefficient of drag (Cd)	0.29	0.29	0.31	0.31	0.29	0.29

### INTERIOR DIMENSIONS, front/second-row/third-row seats (in.)

Passenger volume with/without moonroof (cu. ft.)	159.7/162.5	159.7/162.5	159.7/162.5	159.7/162.5	159.7/162.5	159.7/162.5
Interior volume with/without moonroof (cu. ft.)	193.2/195.9	193.2/195.9	193.2/195.9	193.2/195.9	193.2/195.9	193.2/195.9
Head room	40.1/39.9/37.4	40.1/39.9/37.4	40.1/39.9/37.4	40.1/39.9/37.4	40.1/39.9/37.4	40.1/39.9/37.4
Shoulder room	62.4/62.7/58.5	62.4/62.7/58.5	62.4/62.7/58.5	62.4/62.7/58.5	62.4/62.7/58.5	62.4/62.7/58.5
Hip room	59.6/66.2/48.8	59.6/66.2/48.8	59.6/66.2/48.8	59.6/66.2/48.8	59.6/66.2/48.8	59.6/66.2/48.8
Leg room	40.3/39.9/38.7	40.3/39.9/38.7	40.3/39.9/38.7	40.3/39.9/38.7	40.3/39.9/38.7	40.3/39.9/38.7

## Weights and Capacities

Curb weight (lb.)	4610	4625	4675	4675	4725	4725
Cargo volume <sup>64</sup> (cu. ft.) behind third/second-row/first-row seats	33.5/75.2/101	33.5/75.2/101	33.5/75.2/101	33.5/75.2/101	33.5/75.2/101	33.5/75.2/101
Fuel tank (gal.)	18	18	18	18	18	18
Seating capacity	8	8/7	7	7	7	7

## Towing

Towing capacity <sup>48, 49</sup> (lb.)	3500	3500	3500	3500	3500	3500
---	------	------	------	------	------	------

## Tires

All-Season steel-belted radials	S	S	S	S	S	S
Tire repair kit	S	S	S	S	S	S
Spare tire <sup>4</sup>	O	O	O	O	O	O

## Mileage estimates (mpg city/highway/combined)<sup>8</sup>

Front-Wheel Drive (FWD)	36/36/36	36/36/36	36/36/36	36/36/36	36/36/36	36/36/36
All-Wheel Drive (AWD)	35/36/35	35/36/35	35/36/35	35/36/35	35/36/35	35/36/35

## DISCLOSURES

1. Apps and services are subject to change at any time without notice. Data charges may apply. Apple CarPlay® functionality requires a compatible iPhone® connected with an approved data cable into the USB media port. Apple CarPlay® is a registered trademark of Apple Inc. 2. Android Auto is a trademark of Google LLC. Android Auto requires compatible smartphone. Operability depends on network availability, a cellular connection and GPS signal. Services subject to change at any time without notice. Data charges may apply. To learn more, go to <https://www.toyota.com/audio-multimedia/>. To learn more about Toyota's Connected Services data collection, use, sharing and retention practices, please visit <https://www.toyota.com/support/privacy-rights/>. 3. 2023 Sienna vs. 2022 and 2023 competitors. Information from manufacturers' websites as of 9/01/2021. Excludes electric vehicles. EPA-estimated 36 city/36 hwy/36 combined mpg for 2023 Sienna FWD models. Use for comparison purposes only. Your mileage will vary for many reasons, including your vehicle's condition and how/where you drive. See [www.fueleconomy.gov](http://www.fueleconomy.gov). 4. When spare tire is added to Limited AWD, Platinum AWD or 25th Anniversary Edition AWD, second-row ottomans are removed. Do not use the ottoman feature when the vehicle is in motion. Only use when the vehicle is stationary. If the ottoman feature is in use during an accident, the lap belt may slide past the hips. This could result in restraint forces being applied directly to the abdomen, or your neck may contact the shoulder belt, increasing the risk of death or serious injury. See *Owner's Manual* for details. 5. This floor mat/floor liner was designed specifically for use in your model and model year vehicle and SHOULD NOT be used in any other vehicle. To avoid potential interference with pedal operation, each mat/liner must be secured with its fasteners. Do not install a floor mat/floor liner on top of an existing floor mat/floor liner. 6. Installation of accessories located near the side-door kick sensors may require disabling or removing the kick sensor, and the sensor operation setting in your vehicle should be turned off. Water, weather, dirt, and other conditions also may cause the sensor to not operate properly or to operate unintentionally. See *Owner's Manual* for limitations. 7. Rated for 1500 watts shared between both outlets. Do not exceed 1500 watts. See *Owner's Manual* for additional limitations and details. 8. EPA-estimated 36 city/36 hwy/36 combined mpg rating for 2023 Sienna FWD models; 35 city/6 hwy/35 combined mpg rating for 2023 Sienna AWD models. Use for comparison purposes only. Your mileage will vary for many reasons, including your vehicle's condition and how/where you drive. See [www.fueleconomy.gov](http://www.fueleconomy.gov). 9. 2023 Sienna vs. 2022 and 2023 competitors. Information from manufacturers' websites as of 9/01/2021. 10. Use only if aware of circumstances surrounding vehicle and it is legal and safe to do so (e.g., do not remotely start engine if vehicle is in an enclosed space or vehicle is occupied by a child). Remote Connect depends on factors outside of Toyota's control, including an operative telematics device, a cellular connection, GPS signal, and the availability of a compatible wireless network, without which system functionality and availability may be limited or precluded. Digital Key also requires Bluetooth® connectivity. Service may vary by vehicle and region. Requires app download and registration/subscription after trial (if applicable). Terms of Use apply. Data charges may apply. Remote start/stop not available on manual transmission-equipped vehicles. Services subject to change at any time without notice. See usage precautions and service limitations in *Toyota Owner's Manual* and at <https://www.toyota.com/connected-services/> for additional details. To learn about Toyota's Connected Services data collection, use, sharing and retention practices, please visit <https://www.toyota.com/privacyvts/>. The Remote Connect trial period (if applicable) is at no extra cost and begins on the original date of purchase or lease of a new vehicle. Subscription required after trial to access the service. Terms of Use apply. 11. May not be compatible with all mobile phones, MP3/WMA players and like models. 12. At speeds of 9 mph or less, Front and Rear Parking Assist with Automatic Braking (PA w/ AB) is designed to assist drivers in avoiding potential collisions with nearby static objects when the vehicle is in Drive or Reverse and approaching crossing vehicles when the vehicle is in Reverse. Do not overly rely on PA w/AB. Always look around outside the vehicle and use mirrors to confirm clearance. Certain vehicle and environmental factors, including an object or vehicle's shape, size and composition, may affect the system's effectiveness. See *Owner's Manual* for additional limitations and details. 13. Connected Services depend on factors outside Toyota's control, including an operative telematics device, a cellular connection, GPS signal and the availability of a compatible wireless network, without which system functionality and availability may be limited or precluded, including access to response center and emergency support. Service may vary by vehicle and region. Apps and services subject to change at any time without notice. Requires app download/registration and subscription after trial (if applicable). Terms of Use apply. Data usage and charges may apply. See usage precautions and service limitations in *Owner's Manual* and <https://www.toyota.com/connected-services/> for additional limitations and details. To learn about Toyota's Connected Services data collection, use, sharing and retention practices, please visit <https://www.toyota.com/privacyvts/>. All trials begin on the original date of purchase or lease of a new vehicle, with the exception of Wi-Fi for which the trial begins at the time of activation. Paid subscription required after trial in order to continue accessing the respective services. Terms of Use apply. 14. Toyota app requires an active Remote Connect trial or subscription. 15. Apple and the Apple logo are trademarks of Apple Inc., registered in the U.S. and other countries. 16. Android is a trademark of Google LLC. 17. Safety Connect® depends on factors outside of Toyota's control, including an operative telematics device, a cellular connection, GPS signal, and the availability of a compatible wireless network, without which system functionality and availability may be limited or precluded, including access to response center and emergency support. Stolen vehicle police report required to use Stolen Vehicle Locator. Automatic Collision Notification activates only in limited circumstances. Requires app download/registration and subscription after trial (if applicable). Service subject to change at any time without notice. Terms of Use apply. Service may vary by vehicle and region. See usage precautions and service limitations in *Owner's Manual* and at [toyota.com/connected-services](http://toyota.com/connected-services) for additional details. To learn about Toyota's Connected Services data collection, use, sharing and retention practices, please visit <https://www.toyota.com/privacyvts/>. The Safety Connect® trial period is at no extra cost and begins on the original date of purchase or lease of a new vehicle. After the trial period expires, enrollment in paid subscription is required to access the service. 18. Requires adequate cellular coverage and GPS signal strength. May not work in all areas. Service may vary by vehicle and region. See Toyota Dealer for details and exclusions. 19. Building and/or parking structures may limit system effectiveness. Stolen vehicle police report required to use Stolen Vehicle Locator. For additional assistance contact the Toyota Customer Experience Center at 1-800-331-4331. 20. Information provided is based on the last time data was collected from the vehicle and is not real-time data. Service Connect depends on factors outside of Toyota's control, including an operative telematics device, a cellular connection, GPS signal, and the availability of a compatible wireless network, without which system functionality and availability may be limited or precluded. Service may vary by vehicle and region. Requires app download/registration and subscription after trial. Service subject to change at any time without notice. Terms of Use apply. Data charges may apply. See usage precautions and service limitations in *Owner's Manual* and at [toyota.com/connected-services](http://toyota.com/connected-services) for additional details. To learn about Toyota's Connected Services data collection, use, sharing and retention practices, please visit <https://www.toyota.com/privacyvts/>. Service Connect is not renewable as a stand-alone service and requires a subscription to any of Safety Connect®, Remote Connect or Drive Connect upon trial expiration. The Service Connect trial period is at no extra cost and begins on the original date of purchase or lease of a new vehicle. Subscription required after trial. Service Connect renewal will be included when Safety Connect®, Remote Connect or Destination Assist connected service renewal is selected. Service Connect is not renewable as a stand-alone service. 21. Eligible vehicle and wireless service required. Wi-Fi Connect depends on factors outside of Toyota's control, including an operative telematics device, a cellular connection, GPS signal, and the availability of a compatible wireless network, without which system functionality and availability may be limited or precluded. Wi-Fi Connect coverage and service not available everywhere. Valid in the contiguous U.S. and Alaska. Do not drive distracted. Go to [att.com/toyota](http://att.com/toyota) for terms and conditions. Data usage and charges apply. Up to 5 devices can be supported using in-vehicle connectivity. Apps and services subject to change at any time without notice. The Wi-Fi Connect trial begins at the time of enrollment and expires the earlier of 3GB data use or the 1-month trial period ends. The Wi-Fi Connect trial begins at the time of enrollment and expires when 30 days or the earlier of 3GB of data is used or the 1-month period ends. Subscription required after trial. Integrated Streaming requires separate subscriptions to third-party provider services. Terms of Use apply. 22. Dynamic Navigation depends on factors outside of Toyota's control, including an operative telematics device, a cellular connection, GPS signal, and the availability of a compatible wireless network, without which system functionality and availability may be limited or precluded. Services not available in every city or roadway. Use common sense when relying on information provided. Service may vary by vehicle and region. Registration is required. Subscription required after trial. Terms of Use apply. Data charges may apply. See *Owner's Manual* and <https://www.toyota.com/connected-services> for additional limitations and details. To learn about Toyota's Connected Services data collection, use, sharing and retention practices, please visit <https://www.toyota.com/privacyvts/>. The Dynamic Navigation trial period is at no extra cost and begins on the original date of purchase or lease of a new vehicle. Paid subscription required after trial to access the service. 23. Destination Assist depends on factors outside of Toyota's control, including an operative telematics device, a cellular connection, GPS signal, and the availability of a compatible wireless network, without which system functionality and availability may be limited or precluded. Use common sense when relying on this information. Service may vary by vehicle and region. Registration required. Subscription required after trial. Services subject to change at any time without notice. Terms of Use apply. Data charges may apply. See *Owner's Manual* and [toyota.com/connected-services](http://toyota.com/connected-services) for additional limitations and details. To learn about Toyota's Connected Services data collection, use, sharing and retention practices, please visit <https://www.toyota.com/privacyvts/>. The Destination Assist trial period is at no extra cost and begins on the original date of purchase or lease of a new vehicle. Paid subscription required after trial to access the service. 24. Not all smartwatches are compatible with Remote Connect: Samsung Gear, Fitbit, Garmin are not compatible. 25. Amazon, Alexa and all related marks are trademarks of Amazon.com, Inc. or its affiliates. Certain functions require adequate signal strength and/or smartphone technology/connectivity. Not all Amazon Alexa functionality is available for in-vehicle use. See applicable app for details. Download of the Toyota app and Toyota+Alexa app are both required to begin in-vehicle use of Alexa. Data charges may apply for certain functions. Apps and services subject to change at any time without notice. To learn more, go to <https://www.toyota.com/audio-multimedia/>. To learn more about Toyota's data collection, use, sharing and retention practices, please visit <https://www.toyota.com/privacyvts/>. 26. Google is a trademark of Google LLC. 27. JBL® is a registered trademark of Harman International Industries, Inc. 28. iPhone® is a registered trademark of Apple Inc. All rights reserved. 29. Android is a trademark of Google LLC. 30. Trial length and service availability may vary by model, model year or trim. Service will automatically stop at the end of your trial subscription period unless you decide to continue service. If you do not wish to enjoy your trial, you can cancel by calling the number below. All SiriusXM services require a subscription, each sold separately by SiriusXM after the trial period. **Service subject to the SiriusXM Customer Agreement and Privacy Policy; visit [www.siriusxm.com](http://www.siriusxm.com) to see complete terms and how to cancel which includes calling 1-866-635-2349.** Some services and features are subject to device capabilities and location availability. All fees, content and features are subject to change. SiriusXM, Pandora and all related logos are trademarks of Sirius XM Radio Inc. and its respective subsidiaries. 31. SiriusXM trial length and service availability may vary by model, model year or trim. 32. Toyota Safety Sense™ effectiveness is dependent on many factors including road, weather and vehicle conditions. Drivers are responsible for their own safe driving. Always pay attention to your surroundings and drive safely. See *Owner's Manual* for additional limitations and details. 33. The Pre-Collision System (PCS) with Pedestrian Detection (PD) is designed to determine if impact is imminent and help reduce impact speed and damage in certain frontal collisions involving a vehicle, a pedestrian or a bicyclist. PCS w/PD is not a substitute for safe and attentive driving. System effectiveness depends on many factors, such as speed, size and position of pedestrian or bicyclist and weather, light and road conditions. See *Owner's Manual* for additional limitations and details. 34. Full-Speed Range Dynamic Radar Cruise Control is designed to assist the driver and is not a substitute for safe and attentive driving practices. System effectiveness is dependent on road, weather and traffic conditions. See *Owner's Manual* for additional limitations and details. 35. Lane Departure Alert with Steering Assist is designed to read visible lane markers under certain conditions. It provides a visual and audible alert and slight steering force when lane departure is detected. It is not a collision-avoidance system or a substitute for safe and attentive driving. Effectiveness is dependent on many factors including road, weather and vehicle conditions. See *Owner's Manual* for additional limitations and details. 36. Automatic High Beams operate at speeds above 25 mph. Factors such as a dirty windshield, weather, lighting and terrain limit effectiveness, requiring the driver to manually operate the high beams. See *Owner's Manual*

## DISCLOSURES

for additional limitations and details. **37.** Lane Tracing Assist (LTA) is designed to read visible lane markers and detect other vehicles under certain conditions. It is only operational when DRCC is engaged. See *Owner's Manual* for additional limitations and details. **38.** Do not rely exclusively on Road Sign Assist (RSA). RSA is a driver support system that utilizes the vehicle's forward-facing camera and navigation system (when data is available) to recognize certain road signs and provide information to the driver via the multi-information display and/or Head-Up Display. Effectiveness is dependent on road, weather, vehicle and sign conditions. Use common sense when using RSA and do not drive distracted. See *Owner's Manual* for additional limitations and details. **39.** SoTex® is a registered trademark of Toyota Motor Sales, U.S.A., Inc. **40.** EV Mode lets you operate solely on battery power at low speeds for short distances and in limited circumstances, such as in a parking garage. Different conditions may prevent or limit usage. See your *Owner's Manual* for limitations and details. **41.** Airbag systems are Supplemental Restraint Systems and are designed to inflate only under certain conditions and in certain types of severe collisions. To decrease the risk of injury from an inflating airbag, always wear seatbelts and sit upright in the middle of the seat as far back as possible. Do not put objects in front of an airbag or around the seatback. Do not use a rearward-facing child seat in any front passenger seat. See *Owner's Manual* for additional limitations and details. **42.** Do not rely exclusively on the Blind Spot Monitor. Always look over your shoulder and use your turn signal. There are limitations to the function, detection and range of the monitor. See *Owner's Manual* for additional limitations and details. **43.** Do not rely exclusively on the Rear Cross-Traffic Alert system. Always look over your shoulder and use your mirrors to confirm rear clearance. There are limitations to the function, detection and range of the system. See *Owner's Manual* for additional limitations and details. **44.** The Panoramic View Monitor does not provide a comprehensive view of the area surrounding the vehicle. You should also look around outside your vehicle and use your mirrors to confirm surrounding clearance. Environmental conditions may limit effectiveness and view may become obscured. See *Owner's Manual* for additional limitations and details. **45.** Qi wireless charging may not be compatible with all mobile phones, MP3/WMA players and like models. When using the wireless charging system, avoid placing metal objects between the wireless charger and the mobile device when charging is active. Doing so may cause metal objects to become hot and could cause burns. **46.** When the system is on, Automatic Electric Parking Brake is designed to automatically engage the Electric Parking Brake under limited conditions. It may not hold the vehicle under all conditions and does not function when the vehicle is in reverse. Automatic Electric Parking Brake is not a substitute for manual use of the Electric Parking Brake. See *Owner's Manual* for additional limitations and details. **47.** When the system is on, Brake Hold is designed to keep the brakes engaged after the driver brings the vehicle to a complete stop. It may not hold the vehicle under certain conditions and does not function when the vehicle is in reverse. Brake Hold is not a substitute for safe and attentive driving. See *Owner's Manual* for additional limitations and details. **48.** Selection of the Genuine Toyota tow hitch will require removing or disabling the kick sensor, and the sensor operation setting in your vehicle should be turned off. Water, weather, dirt and other conditions also may cause the sensor to not operate properly or to operate unintentionally. See *Owner's Manual* for limitations. **49.** Before towing, confirm your vehicle and trailer are compatible, hooked up and loaded properly and that you have any necessary additional equipment. Do not exceed any Weight Ratings and follow all instructions in your *Owner's Manual*. The maximum you can tow depends on base curb weight plus the total weight of any cargo, occupants, and added vehicle equipment. "Added vehicle equipment" includes additional standard/optional equipment and accessories added by the manufacturer, dealers, and/or vehicle owners. The only way to be certain of your vehicle's exact curb weight is to weigh your vehicle without passengers or cargo. [Calculated with the new SAE J2807 method.] See *Owner's Manual* for limitations. **50.** Extra-cost color. **51.** Toyota strives to build vehicles to match customer interest and thus they typically are built with popular options and option packages. Not all options/packages are available separately and some may not be available in all regions of the country. See [toyota.com](http://toyota.com) for information about options/packages commonly available in your area. If you would prefer a vehicle without any or with different options, contact your dealer to check for current availability or the possibility of placing a special order. Color(s) depicted may vary based on multiple factors, including ambient lighting and the format in which it is being viewed (e.g., computer, mobile device or print). **52.** The backup camera does not provide a comprehensive view of the rear area of the vehicle and you should also look around the vehicle, using mirrors to confirm rearward clearance. Environmental conditions may limit effectiveness and view may become obscured. See *Owner's Manual* for additional limitations and details. **53.** Headphones are for passenger use only. **54.** The Bluetooth® word mark and logos are registered trademarks owned by Bluetooth SIG, Inc., and any use of such marks by Toyota is under license. A compatible Bluetooth®-enabled phone must first be paired. Phone performance depends on software, coverage and carrier. **55.** HomeLink® and the HomeLink® house icon are registered trademarks of Gentex Corporation. **56.** Rated for 12 volts/10 amps. See *Owner's Manual* for additional limitations and details. **57.** Vehicle Stability Control is an electronic system designed to help the driver maintain vehicle control under adverse conditions. It is not a substitute for safe and attentive driving practices. Factors including speed, road conditions, weather and driver steering input can all affect whether VSC will be effective in preventing a loss of control. See *Owner's Manual* for additional limitations and details. **58.** Brake Assist is designed to help the driver take advantage of ABS and is not a substitute for safe driving practices. Braking effectiveness also depends on proper vehicle maintenance, tire and road conditions. See *Owner's Manual* for additional limitations and details. **59.** Smart Stop Technology® operates only in the event of certain contemporaneous brake and accelerator pedal applications. When engaged, the system will reduce power to help the brakes bring the vehicle to a stop. Factors including speed, road conditions and driver input can all impact stopping distance. Smart Stop Technology® is not a substitute for safe and attentive driving and does not guarantee instant stopping. See *Owner's Manual* for additional limitations and details. **60.** The Tire Pressure Monitor System alerts the driver when tire pressure is critically low. For optimal tire wear and performance, tire pressure should be checked regularly with a gauge; do not rely solely on the monitor system. See *Owner's Manual* for additional limitations and details. **61.** Hill Start Assist Control is designed to help minimize backward rolling on steep ascents. It is not a substitute for safe driving judgment and practices. Factors including speed, grade, surface conditions and driver input can all affect whether HAC will be effective in preventing a loss of control. See *Owner's Manual* for additional limitations and details. **62.** The engine immobilizer is a state-of-the-art anti-theft system that is initiated when you insert your key into the ignition switch or bring a Smart Key fob into the vehicle. The engine will only start if the code in the transponder chip inside the key/fob matches the code in the vehicle's immobilizer. The transponder chip is embedded in the key/fob and can be costly to replace. If you lose a key or fob, your Toyota dealer can help or go to [www.aloa.org](http://www.aloa.org) to find a qualified locksmith in your area who can perform high-security key service. **63.** Meets Tier 2/Bin 3 Federal emissions standard. **64.** Cargo and load capacity limited by weight and distribution. Always properly secure cargo and cargo area. **65.** JBL® and Clari-Fi® are registered trademarks of Harman International Industries, Inc. **66.** Do not overload your vehicle. See *Owner's Manual* for weight limits and restrictions. **67.** Dashcam may not record under certain conditions. Always respect the privacy rights of others. See your dashcam *Owner's Manual* for details.

Toyota strives to build vehicles to match customer interest and thus they typically are built with popular options and option packages. Not all options/packages are available separately and some may not be available in all regions of the country. See [toyota.com](http://toyota.com) for information about options/packages commonly available in your area. If you would prefer a vehicle without any or with different options, contact your dealer to check for current availability or the possibility of placing a special order.

Color(s) depicted may vary based on multiple factors, including ambient lighting and the format in which it is being viewed (e.g., computer, mobile device or print).

Some vehicles are shown with available equipment. Seatbelts should be worn at all times. For details on vehicle specifications, standard features and available equipment in your area, contact your Toyota dealer. A vehicle with particular equipment may not be available at the dealership. Ask your Toyota dealer to help locate a specifically equipped vehicle.

All information presented herein is based on data available at the time of posting, is subject to change without notice and pertains specifically to mainland U.S.A. vehicles only. Vehicles shown may be prototypes, shown using visual effects and/or shown with options. Actual models may vary.



**Mobility**

For Toyota Mobility program details, go to [www.toyotamobility.com](http://www.toyotamobility.com) or call the Toyota Brand Engagement Center at 1-800-331-4331