



TOYOTA

2023 Highlander

2023 HIGHLANDER

Push your limits, in style.

Go above and beyond the ordinary in the 2023 Toyota Highlander. Its all-new 2.4L 4-cylinder turbo engine with available all-wheel-drive capabilities efficiently delivers power, to make the drive just as exciting as the destination. Riding around in the plush, spacious and teched-out interior will have you feeling relaxed and in control every step of the way. And wherever you choose to show up, Highlander's bold yet refined design will keep all eyes on you. So get your crew together and get ready to elevate every journey.





XSE AWD shown in Wind Chill Pearl (extra-cost color).



PERFORMANCE

A step up in performance.

Highlander's new 2.4L turbo powertrain is big on torque and efficiency, so you can find greater adventures. Multi-Terrain Select is designed to help keep you in control in dynamic environments, so you can explore with ease and peace of mind.

2.4L turbo powertrain

A new 2.4L turbo 4-cylinder engine provides 265 horsepower with an enhanced 310 lb.-ft. of torque. Along with up to an EPA-estimated combined 25 mpg,¹ Highlander is ready to take on your adventures.

XSE sport-tuned suspension

Unique to Highlander XSE is a sport-tuned suspension that lets it hug the road a little tighter. Retuned shock absorbers, higher-rate springs and a rear stabilizer bar give you enhanced handling on the road, while its lower, athletic stance shows everyone that it's ready to hit the ground running.

Dynamic Torque Vectoring AWD

Enjoy an upgrade in all-wheel-drive performance. Available Dynamic Torque Vectoring All-Wheel Drive increases responsiveness and stability by sending up to 50 percent of the power to the rear and then further distributing more power to the wheel that needs it.

Towing capacity

The epitome of power and smoothness. Highlander's new 2.4L turbo engine flexes some muscle with its 5000-lb. towing capacity.²

Multi-Terrain Select

Offering you more capability when the pavement ends, Highlander features Multi-Terrain Select (MTS) on All-Wheel Drive (AWD) models. Choose between four modes (Mud & Sand, Rock & Dirt, Snow and Normal) for enhanced traction. When activated, the system is designed to sense slippage and regulate wheelspin — helping to maximize driving performance on different surfaces.

Drive modes

Three distinct drive modes let you tailor Highlander's driving dynamics to match your mood. Sport Mode provides sharper acceleration, Eco Mode helps maximize fuel efficiency, and Normal Mode blends fuel economy with performance.

See numbered footnotes in Disclosures section.



Hybrid Platinum shown in Ruby Flare Pearl (extra-cost color).

EXTERIOR

Elegant from every angle.

Highlander's bold design is hard to ignore. Its sculpted shape and contoured lines display the perfect balance between power and refinement. Now available in a new-to-Highlander Cypress color, it sets another standard for curb appeal. Get ready to turn heads wherever you go.

Twin-tip exhaust

Underneath XSE's unique rear bumper features Highlander's available twin-tip exhaust. Chrome-plated for durability and added attention, it helps finish off the sportier rear design.

20-in. wheels

Highlander shows off more style with its available 20-in. alloy wheels. Standard on XSE, Limited and Platinum, these sleek wheels add more sophistication without compromising performance.

Hands-free power liftgate

Experience freedom, even with your hands full. When you need to engage its available hands-free power liftgate,³ Highlander senses your Smart Key fob and is designed to open automatically when you kick your foot under the rear bumper.

LED headlights

The dynamic front end of Highlander shows off its modern look. The stylish standard LED headlights provide a crisp, clean light, while available auto-leveling LED projector-beam headlights help keep light aimed down at the road for better visibility.



INTERIOR

Always ride in comfort.

Highlander combines space and comfort while featuring a modern design. Seat up to eight with third-row seating, catch a breeze under the available panoramic moonroof, or stay cozy with its available heated and ventilated seats.



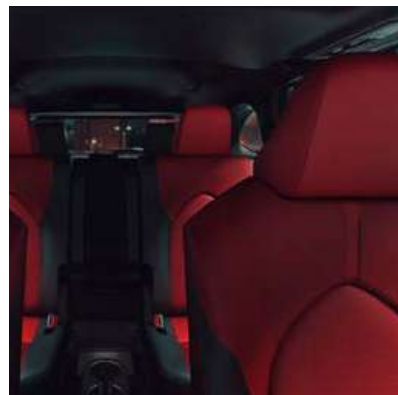
12.3-in. Multi-Information Display

Standard on Limited and Platinum, the available 12.3-in. fully digital gauge cluster presents turn-by-turn directions, safety info, alerts and more, all at a glance, so you can keep your eyes on the road.



Qi wireless charging

Highlander has available Qi-compatible wireless smartphone charging.⁴ Leave the cables at home and seamlessly charge on the go by placing your smartphone on the shelf right below the touchscreen.



Two-tone XSE interior

Feel the sporty vibe of XSE every time you enter. With its available red and black leather-trimmed seats with red accent stitching across the instrument panel, you can't help but feel a little more empowered behind the wheel.



Third-row seating

Highlander's roomy interior gives you enough space to seat up to eight, making it great for larger groups and families.



Panoramic moonroof

Follow the stars above with Highlander's available panoramic moonroof with front power tilt/slide moonroof. Open it up to catch a breeze and enjoy the wide-open view, or easily find cover with a power-retractable sunshade.

See numbered footnotes in Disclosures section.



Hybrid Platinum AWD shown in Blueprint.

HYBRID

Driven to go the extra mile.

Highlander Hybrid makes the most of what everyone wants to do, on or off the beaten path. With up to an EPA-estimated combined 36 mpg,⁵ you can explore much further and stay out longer. All while enjoying the choice of front-wheel-drive or all-wheel-drive capability.

36

Up to est. mpg⁵



Hybrid Platinum AWD shown in Blueprint.

Hybrid drive modes

Highlander Hybrid offers multiple selectable driving modes that let you choose how it performs: Normal for everyday driving, Eco for maximum efficiency, Sport for enhanced acceleration, EV Mode,⁶ which allows electric-only driving at low speeds for short distances, and Trail Mode, which gives AWD models even more traction.

1500W power inverter

Highlander Hybrid lets you bring the creature comforts of home wherever you go. Just plug in to the available 1500W power inverter in the rear cargo area to power up your essentials.⁷

See numbered footnotes in Disclosures section.

Technology that keeps up with you.

Take advantage of smarter and convenient technologies designed to simplify your everyday life. Trial periods included for the listed connected technologies. Subscription required upon expiration of each trial period.*⁸ 4G network dependent.



Safety Connect[®]

Round-the-clock help when the unexpected happens.⁹

- ✓ Emergency Assistance Button (SOS)
- ✓ Enhanced Roadside Assistance¹⁰
- ✓ Automatic Collision Notification
- ✓ Stolen Vehicle Locator¹¹



Service Connect

Being proactive to help keep your vehicle in peak condition.¹²

- ✓ Vehicle Health Report
- ✓ Vehicle Maintenance Alert
- ✓ Maintenance Reminder



Wi-Fi Connect

Turn your Toyota into a hotspot with 4G connectivity.¹³

- ✓ AT&T Hotspot
- ✓ Integrated Streaming for your subscriptions, such as Apple Music^{®14} and Amazon Music^{™15}



Drive Connect

Enhanced features to get you where you need to be.¹⁶

- ✓ Destination Assist¹⁷
- ✓ Intelligent Assistant¹⁶
- ✓ Cloud Navigation¹⁶



Remote Connect

Manage your vehicle, including remote start and much more.¹⁸

- ✓ Remote Vehicle Start
- ✓ Unlock/Lock
- ✓ Remote Notifications
- ✓ Guest Driver
- ✓ Smartwatch Compatibility²⁰
- ✓ Google Assistant^{™21} Capability

AUDIO MULTIMEDIA

High-fidelity. Highly entertaining.

Enhance every drive with an experience that's all about you. Whether enjoying the sounds of your favorite soundtrack or interacting with an interface that you're familiar with, you'll always be surrounded by comfort.



JBL® Premium Audio System

Immerse yourself in quality sound with Highlander's available JBL®²² Premium Audio system. An 11-speaker audio system equipped with a subwoofer, it provides phenomenal sound that amplifies every drive.



Wireless Apple CarPlay®

Bring along a familiar face. With Highlander's wireless Apple CarPlay®²⁵ compatibility, you can use your compatible iPhone®²⁶ with the multimedia system to get directions, make calls, send and receive messages, and listen to music, all while staying focused behind the wheel.



Wireless Android Auto™

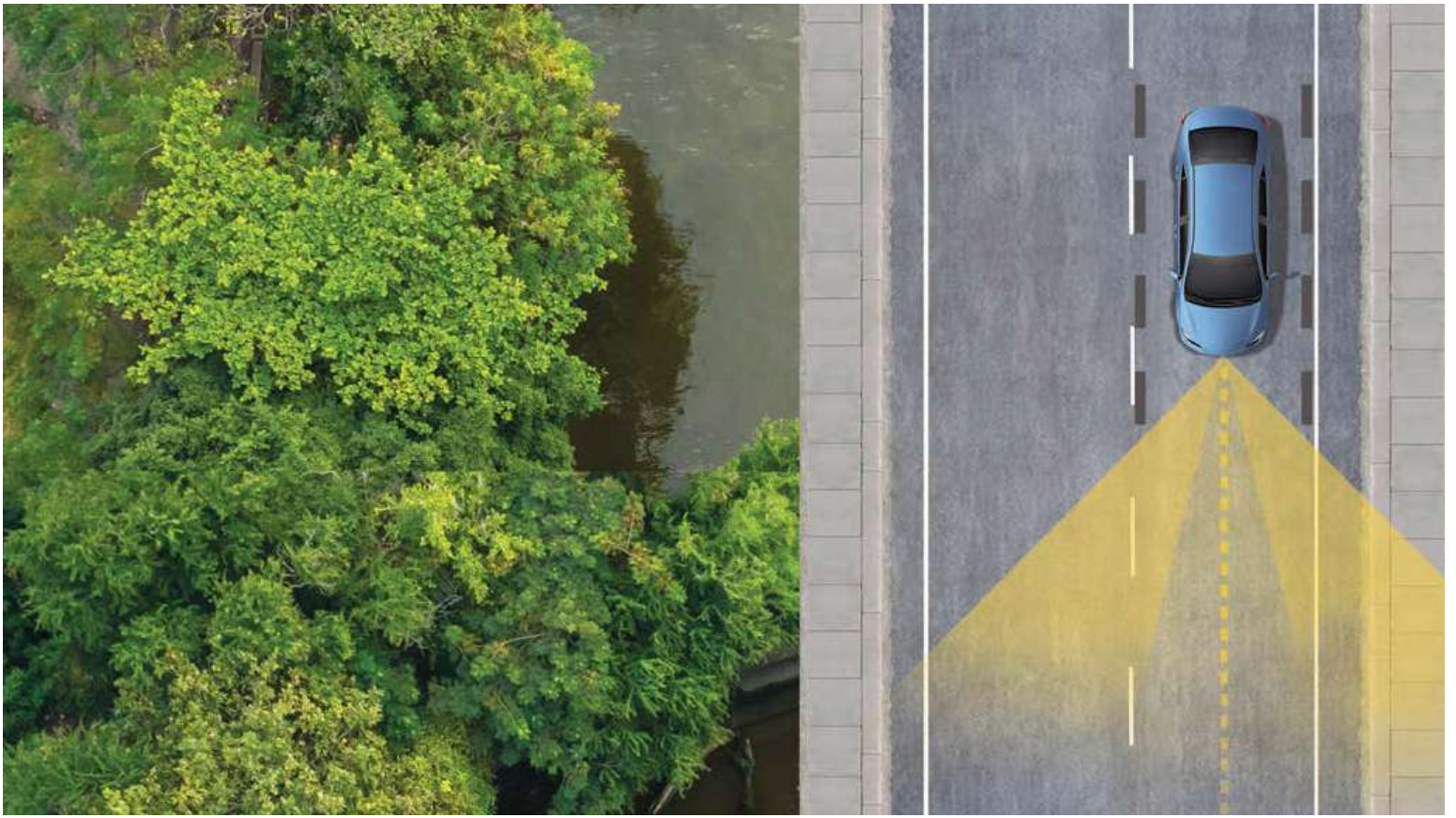
Stay connected on the road. By pairing your compatible Android™²³ phone with the audio multimedia system, Android Auto™²⁴ lets you get real-time traffic alerts, make and receive phone calls, listen to your favorite soundtrack and more.



SiriusXM® Platinum Plan 3-month trial

With a SiriusXM®²⁷ Platinum Plan 3-month trial,²⁸ you get 425+ channels, including 165+ channels in your vehicle, to listen to ad-free music, plus sports, news, talk, comedy and more. Innovative features in Highlander make it even easier to search, discover and listen than ever before, through personalized channel recommendations curated just "For You." Plus, the Live Sports category puts all your games and teams in one place, for easy access.

See numbered footnotes in Disclosures section.



TOYOTA SAFETY SENSE™ 2.5+ (TSS 2.5+)

Peace of mind comes standard.

Toyota Safety Sense™ 2.5+ (TSS 2.5+)²⁹ is a bundle of active safety features included on many new Toyota vehicles at no additional cost.

These innovative features were designed to help protect you and your passengers from harm.



Pre-Collision System with Pedestrian Detection³⁰



Full-Speed Range Dynamic Radar Cruise Control³¹



Lane Departure Alert with Steering Assist³²



Automatic High Beams³³



Lane Tracing Assist³⁴



Road Sign Assist³⁵

HIGHLANDER MODELS



L

Includes these standard features

Mechanical/Performance

- ✓ 2.4-liter turbocharged 4-cylinder with 265 hp and 310 lb.-ft.
- ✓ Direct Shift-8AT (8-speed Electronically Controlled automatic Transmission)
- ✓ Available All-Wheel Drive (AWD)
- ✓ Snow Mode + Drive Mode Select (Eco, Normal, Sport)
- ✓ Available Multi-Terrain Select (MTS) (Mud & Sand, Rock & Dirt, Normal)
- ✓ Up to 22 city/29 highway/25 combined est. mpg rating¹

Exterior Features

- ✓ Color-keyed heated power outside mirrors with turn signal and manual folding feature
- ✓ LED projector headlights with Daytime Running Lights (DRL)
- ✓ LED taillights
- ✓ Front grille in material black with silver-painted surround
- ✓ 18-in. painted alloy wheels

Interior Features

- ✓ Seating for eight with second-row bench seat and 60/40 split/fold seats
- ✓ Three-zone automatic climate control
- ✓ Fabric-trimmed seats
 - 8-way power-adjustable driver's seat
 - 4-way manual-adjustable front passenger seat
 - 60/40 split, sliding and reclining fold-flat second-row bench seats
 - 60/40 split, fold-flat third-row seats
- ✓ Five total USB ports³⁶ and two 12V outlets³⁷
- ✓ 7-in. color LCD Multi-Information Display (MID)
- ✓ Smart Key System with Push Button Start

Audio Multimedia

- ✓ 8.0-in. Toyota Audio Multimedia with six speakers
- ✓ Wireless Apple CarPlay²⁵ & Android Auto^{TM24} compatibility
- ✓ SiriusXM²⁷ with 3-month Platinum Plan trial subscription²⁸
- ✓ Connected Services trials⁹ including Safety Connect,⁹ Service Connect¹² and Wi-Fi Connect¹³ (4G network dependent)

Safety Features

- ✓ Toyota Safety SenseTM 2.5+ (TSS 2.5+)²⁹
- ✓ Star Safety SystemTM
- ✓ Eight airbags³⁸
- ✓ Rear-seat reminder³⁹



LE

Adds these top features

Exterior Features

- ✓ Color-keyed heated power outside mirrors with turn signal and blind spot warning⁴⁰ indicators and manual folding feature
- ✓ LED fog lights
- ✓ Height-adjustable power liftgate with jam protection

Interior Features

- ✓ Leather-trimmed shift knob and steering wheel

Audio Multimedia

- ✓ Connected Services trials⁹ including Safety Connect,⁹ Service Connect,¹² Remote Connect¹⁸ and Wi-Fi Connect¹³ (4G network dependent)

Safety Features

- ✓ Blind Spot Monitor (BSM)⁴⁰ with Rear Cross-Traffic Alert (RCTA)⁴¹



XLE

Adds these top features

Exterior Features

- ✓ 18-in. machined-finish alloy wheels
- ✓ Power tilt/slide moonroof
- ✓ Roof rails

Interior Features

- ✓ Qi-compatible wireless smartphone charging⁴
- ✓ Auto-dimming rearview mirror with HomeLink⁴² universal garage door opener
- ✓ SofTex[®]-trimmed⁴³ front- and second-row seats
 - Heated front seats
 - 10-way power-adjustable driver's seat including power lumbar support
 - 8-way power-adjustable front passenger seat
- ✓ Second-row sunshades

Packages/Options

- ✓ 12.3-in. Toyota Audio Multimedia
- ✓ Seating for up to eight with second-row bench seat and 60/40 split/fold seats

HIGHLANDER MODELS



XSE

Adds these top features

Mechanical/Performance

- ✓ Sport-tuned suspension

Exterior Features

- ✓ LED projector headlights with black accents and LED-strip Daytime Running Lights (DRL)
- ✓ 20-in. machined-finish black wheels
- ✓ Aggressive mesh front grille with sporty front bumper and lower spoiler
- ✓ Rear lower bumper with chrome-finished lower spoiler trim
- ✓ Color-keyed side rocker panels with chrome-finished lower trim
- ✓ Black roof rails
- ✓ Twin-tip exhaust

Interior Features

- ✓ Ambient interior lighting

Packages/Options

- ✓ 12.3-in. Toyota Audio Multimedia
- ✓ 11-speaker JBL®²² Premium Audio including subwoofer and amplifier
- ✓ Red leather-trimmed front- and second-row seats



Limited

Adds these top features to those offered on XLE

Exterior Features

- ✓ Color-keyed heated power outside mirrors with turn signal and blind spot warning indicators,⁴⁰ power folding, and puddle lights with integrated Highlander logo
- ✓ High-output LED fog lights
- ✓ 20-in. chrome-finished wheels
- ✓ Front grille in black paint with chrome-plated surround
- ✓ Height-adjustable hands-free power liftgate with jam protection³

Interior Features

- ✓ Leather-trimmed front- and second-row seats
 - Heated and ventilated front seats
 - 10-way power-adjustable driver's seat including power lumbar support
 - 4-way power-adjustable front passenger seat
 - Seat memory function
- ✓ 12.3-in. color LCD gauge cluster
- ✓ Heated steering wheel
- ✓ Faux wood door trim and ornamental dash trim
- ✓ Front doorsill metal scuff plate
- ✓ One 120V outlet (100W)⁴⁴ located on the bottom rear of the center console

Audio Multimedia

- ✓ 12.3-in. Toyota Audio Multimedia
- ✓ 11-speaker JBL®²² Premium Audio including subwoofer and amplifier
- ✓ Connected Services trials,⁹ including Safety Connect,⁹ Service Connect,¹² Remote Connect,¹⁸ Wi-Fi Connect¹³ and Drive Connect¹⁶ (4G network dependent)

Packages/Options

- ✓ Panoramic View Monitor⁴⁵
- ✓ Seating for up to eight with second-row bench seat and 60/40 split/fold seats



Platinum

Adds these top features to those offered on Limited

Exterior Features

- ✓ LED projector headlights with Adaptive Front-Lighting System (AFS),⁴⁶ auto leveling and LED-strip Daytime Running Lights (DRL)
- ✓ Front grille in black paint and chrome-plated surround with front lower bumper in silver finish
- ✓ Rear lower bumper accent
- ✓ Rear bumper scuff plate
- ✓ 20-in. alloy wheels
- ✓ Rain-sensing washer-linked variable intermittent windshield wipers
- ✓ Power Panoramic View Moonroof with sunshade and one-touch open/close with jam protection

Interior Features

- ✓ Leather-trimmed front- and second-row seats
 - Heated and ventilated front seats
 - Heated second-row captain's chairs
 - 10-way power-adjustable driver's seat including power lumbar support
 - 8-way power-adjustable front passenger seat
 - Seat memory function
- ✓ 10-in. color Head-Up Display (HUD)
- ✓ Illuminated front doorsill metal scuff plate
- ✓ Panoramic View Monitor⁴⁵
- ✓ Digital rearview mirror with HomeLink®⁴² universal garage door opener

HIGHLANDER HYBRID MODELS



Hybrid LE

Includes these top features



Hybrid XLE

Adds these top features



Bronze Edition

Adds these top features

Mechanical/Performance

- ✓ 2.5-liter 4-cylinder hybrid engine
- ✓ Electronically controlled Continuously Variable Transmission (ECVT)
- ✓ Available Electronic All-Wheel Drive (AWD)
- ✓ Available Trail Mode
- ✓ Up to 36 city/35 highway/36 combined est. mpg rating⁵

Exterior Features

- ✓ Color-keyed heated power outside mirrors with turn signal and blind spot warning⁴⁰ indicators and manual folding feature
- ✓ LED fog lights
- ✓ Grille shutters
- ✓ Height-adjustable power liftgate with jam protection
- ✓ 18-in. painted alloy wheels

Interior Features

- ✓ Leather-trimmed shift knob and steering wheel
- ✓ Smart Key System with Push Button Start with liftgate functions

Audio Multimedia

- ✓ 8.0-in. Toyota Audio Multimedia with six speakers
- ✓ Wireless Apple CarPlay^{®25} & Android Auto^{™24} compatibility
- ✓ SiriusXM^{®27} with 3-month Platinum Plan trial subscription²⁸
- ✓ Connected Services trials,⁸ including Safety Connect,⁹ Service Connect,¹² Remote Connect¹⁸ and Wi-Fi Connect¹³ (4G network dependent)
- ✓ 7-in. color LCD Multi-Information Display (MID)

Safety Features

- ✓ Toyota Safety Sense[™] 2.5+ (TSS 2.5+)²⁹
- ✓ Star Safety System[™]
- ✓ Eight airbags³⁸
- ✓ Rear-seat reminder³⁹
- ✓ Blind Spot Monitor (BSM)⁴⁰ with Rear Cross-Traffic Alert (RCTA)⁴¹

Exterior Features

- ✓ 18-in. machined-finish alloy wheels
- ✓ Power tilt/slide moonroof
- ✓ Roof rails

Interior Features

- ✓ Qi-compatible wireless smartphone charging⁴
- ✓ Auto-dimming rearview mirror with HomeLink^{®42} universal garage door opener
- ✓ SofTex[®]-trimmed⁴³ front- and second-row seats
 - Heated front seats
 - 10-way power-adjustable driver's seat including power lumbar support
 - 8-way power-adjustable front passenger seat
- ✓ Second-row sunshades

Packages/Options

- ✓ 12.3-in. Toyota Audio Multimedia
- ✓ Seating for up to eight with second-row bench seat and 60/40 split/fold seats

Exterior Features:

- ✓ 18-in. bronze-finished alloy wheels
- ✓ Rain-sensing washer-linked variable intermittent windshield wipers

Interior Features:

- ✓ SofTex[®]-trimmed⁴³ front- and second-row seats with fabric inserts and bronze-colored stitching
 - Heated front seats
 - 10-way power-adjustable driver's seat including power lumbar support
 - 8-way power-adjustable front passenger seat
- ✓ Two 120V outlets (1500W shared)⁷ located on the bottom rear of center console and in the luggage area
- ✓ Floor⁴⁷ and cargo mats with bronze-colored stitching
- ✓ Illuminated front doorsill metal scuff plate with bronze finish
- ✓ Bronze-colored interior stitching
- ✓ Height-adjustable hands-free power liftgate³ with jam protection
- ✓ Digital rearview mirror with HomeLink^{®42} universal garage door opener

Audio Multimedia

- ✓ 12.3-in. Toyota Audio Multimedia

HIGHLANDER HYBRID MODELS



Hybrid Limited

Adds these top features to those offered on Hybrid XLE

Exterior Features

- ✓ Color-keyed heated power outside mirrors with turn signal and blind spot warning indicators,⁴⁶ power folding and puddle lights with integrated Highlander logo
- ✓ High-output LED fog lights
- ✓ 20-in. chrome-finished wheels
- ✓ Front grille in black paint with chrome-plated surround
- ✓ Height-adjustable hands-free power liftgate with jam protection³

Interior Features

- ✓ Leather-trimmed front- and second-row seats
 - Heated and ventilated front seats
 - 10-way power-adjustable driver's seat including power lumbar support
 - 8-way power-adjustable front passenger seat
 - Seat memory function
- ✓ 12.3-in. color LCD gauge cluster
- ✓ Heated steering wheel
- ✓ Faux wood door trim and ornamental dash trim
- ✓ Front doorsill metal scuff plate
- ✓ Two 120V outlets (1500W shared)⁷ located on the bottom rear of center console and in the luggage area
- ✓ Ambient interior lighting

Audio Multimedia

- ✓ 12.3-in. Toyota Audio Multimedia
- ✓ 11-speaker JBL^{®22} Premium Audio including subwoofer and amplifier
- ✓ Connected Services trials,⁸ including Safety Connect,⁹ Service Connect,¹² Remote Connect,¹³ Wi-Fi Connect¹³ and Drive Connect¹⁶ (4G network dependent)

Packages/Options

- ✓ Panoramic View Monitor⁴⁵



Hybrid Platinum

Adds these top features to those offered on Hybrid Limited

Exterior Features

- ✓ LED projector headlights with Adaptive Front-Lighting System (AFS),⁴⁶ auto leveling and LED-strip Daytime Running Lights (DRL)
- ✓ Front grille in black paint and chrome-plated surround with front lower bumper in silver finish
- ✓ Rear lower bumper accent
- ✓ Rear bumper scuff plate
- ✓ 20-in. alloy wheels
- ✓ Rain-sensing washer-linked variable intermittent windshield wipers
- ✓ Power Panoramic View Moonroof with sunshade and one-touch open/close with jam protection

Interior Features

- ✓ Leather-trimmed front- and second-row seats
 - Heated and ventilated front seats
 - Heated second-row captain's chairs
 - 10-way power-adjustable driver's seat including power lumbar support
 - 8-way power-adjustable front passenger seat
 - Seat memory function
- ✓ 10-in. color Head-Up Display (HUD)
- ✓ Illuminated front doorsill metal scuff plate
- ✓ Panoramic View Monitor⁴⁵
- ✓ Digital rearview mirror with HomeLink^{®42} universal garage door opener

HIGHLANDER COLORS & TRIMS



Midnight Black Metallic



Blueprint



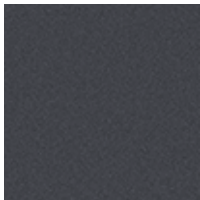
Moon Dust⁴⁸



Ruby Flare Pearl⁴⁸



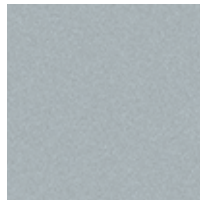
Cypress



Magnetic Gray Metallic



Cement

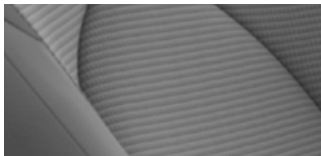


Celestial Silver Metallic



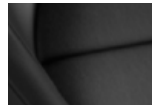
Wind Chill Pearl⁴⁸

L/LE fabric shown in Graphite



Black

XLE SofTex^{®43} trim shown in Graphite



Black



Harvest Beige

Bronze Edition SofTex^{®43} trim shown in Graphite

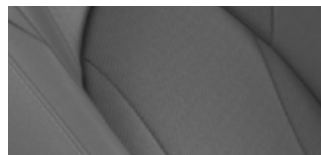


XSE mixed media trim shown in Black

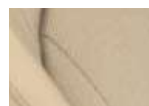


Cockpit Red leather trim

Limited leather trim shown in Graphite

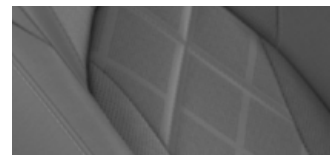


Black

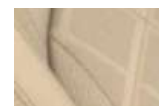


Harvest Beige

Platinum leather trim shown in Graphite



Black



Harvest Beige



Glazed Caramel

HIGHLANDER WHEELS



L/LE 18-in. alloy wheel



XLE 18-in. machined-finish alloy wheel



Bronze Edition 18-in. bronze-finished alloy wheel



XSE 20-in. machined-finish black alloy wheel



Limited 20-in. chrome-finished wheel



Platinum 20-in. alloy wheel

HIGHLANDER ACCESSORIES

This is a great way to add extra personality to your Highlander. Not every accessory is available in your area, so for a complete list of accessories, go to toyota.com/highlander/accessories.



Roof rack cross bars⁴⁹



Running boards



Black emblem overlay



Quick-charge cable



Integrated dashcam⁵¹



Cargo net⁵⁰



Cargo liner⁵⁰



All-weather floor liner⁴⁷



Illuminated doorsill

WARRANTIES

Every Toyota Car, Truck and SUV is built to exceptional standards. And that's not idle boasting. We back it up with these Limited Warranty Coverages:

Basic: 36 months/36,000 miles (all components other than normal wear and maintenance items).

Hybrid-Related Component Coverage: Hybrid-related components, including the battery control module, hybrid control module and inverter with converter, are covered for 8 years/100,000 miles. Refer to applicable *Warranty and Maintenance Guide* for details.

Hybrid Battery: HV battery is covered for 10 years or 150,000 miles, whichever comes first. Warranty coverage is subject to terms and conditions. Refer to applicable *Warranty and Maintenance Guide* for details.

Powertrain: 60 months/60,000 miles (engine, transmission/transaxle, drive system, seatbelts and airbags).

Rust-Through: 60 months/unlimited miles (corrosion perforation of sheet metal).

Emissions: Coverages vary under Federal and California regulations. Refer to applicable *Warranty and Maintenance Guide* for details.

Accessories: For Genuine Toyota Accessories purchased at the time of the new vehicle purchase, the Toyota Accessory Warranty coverage is in effect for 36 months/36,000 miles from the vehicle's in-service date, which is the same coverage as the Toyota New Vehicle Limited Warranty.

For Genuine Toyota Accessories purchased after the new vehicle purchase the coverage is 12 months, regardless of mileage, from the date the accessory was installed on the vehicle, or the remainder of any applicable new vehicle warranty, whichever provides greater coverage.

You may be eligible for transportation assistance if it's necessary that your vehicle be kept overnight for repairs covered under warranty. Please see your authorized Toyota dealership for further details.

For complete details about Toyota's warranties, please visit www.toyota.com, refer to the applicable *Warranty and Maintenance Guide* or see your Toyota dealer.

HIGHLANDER FEATURES⁵²

S = Standard O = Optional P = Available as part of a package

Exterior	L	LE	XLE	XSE	Limited	Platinum	Hybrid LE	Hybrid XLE	Hybrid Bronze Edition	Hybrid Limited	Hybrid Platinum
Smart Key System on front doors and liftgate with Push Button Start, remote keyless entry system with lock, unlock and panic functions; remote illuminated entry	S										
Smart Key System on front doors and liftgate with Push Button Start, remote keyless entry system with lock, unlock, panic and liftgate functions; remote illuminated entry		S	S	S	S	S	S	S	S	S	S
Color-keyed heated power outside mirrors with turn signal and manual folding feature	S										
Color-keyed heated power outside mirrors with turn signal and blind spot warning ⁴⁰ indicators, and manual folding feature		S	S	S			S	S			
Color-keyed heated power outside mirrors with puddle lights with integrated Highlander logo, turn signal, blind spot warning ⁴⁰ indicators, manual folding, and reverse tilt-down with memory feature									S		
Color-keyed heated power outside mirrors with turn signal and blind spot warning ⁴⁰ indicators, power folding, reverse tilt-down with memory feature, and puddle lights with integrated Highlander logo					S	S				S	S
LED projector headlights with Daytime Running Lights (DRL)	S	S	S				S	S			
LED projector headlights with black accents and LED-strip Daytime Running Lights (DRL)				S							
LED projector headlights with LED-strip Daytime Running Lights (DRL)					S				S	S	
LED projector headlights with Adaptive Front-Lighting System (AFS) ⁴⁶ auto leveling and LED-strip Daytime Running Lights (DRL)						S					S
LED fog lights		S	S	S			S	S	S		
High-output LED fog lights					S	S				S	S
LED taillights	S	S	S	S	S	S	S	S	S	S	S
Washer-linked variable intermittent windshield wipers and intermittent rear wiper	S	S	S	S	S		S	S		S	
Rain-sensing washer-linked variable intermittent windshield wipers and intermittent rear wiper						S			S		S
Windshield wiper de-icer	S	S	S	S	S	S	S	S	S	S	S
Rear liftgate windshield defogger	S	S	S	S	S	S	S	S	S	S	S
Rear liftgate windshield washer and backup camera ⁵³ washer	S	S	S	S	S	S	S	S	S	S	S
High Solar Energy-Absorbing (HSEA) glass on front and rear side windows	S	S	S	S	S	S	S	S	S	S	S
Privacy glass on rear side, quarter and liftgate windows	S	S	S	S	S	S	S	S	S	S	S
Acoustic noise-reducing front side windows					S	S				S	S
18-in. painted alloy wheels and P235/65R18 tires	S	S					S				
18-in. machined-finish alloy wheels and P235/65R18 tires			S					S			
18-in. bronze-finished alloy wheels and P235/65R18 tires									S		
20-in. black alloy wheels and P235/55R20 tires				S							
20-in. chrome-finished wheels and P235/55R20 tires					S					S	
20-in. alloy wheels and P235/55R20 tires						S					S
Black-painted front grille with silver-painted surround	S	S	S				S	S	S		
Black mesh front grille with sporty front bumper and lower spoiler				S							
Black-painted front grille with chrome-plated surround					S					S	
Black-painted front grille with chrome-plated surround and front lower bumper in silver finish						S					S
Grille shutters							S	S	S	S	S
Rear lower bumper in black finish	S	S	S				S	S	S		
Rear lower bumper in dark gray metallic finish					S					S	
Rear lower bumper in gray metallic finish with chrome-finished lower spoiler trim				S							
Rear lower bumper in silver finish						S					S
Color-keyed side rocker panels and lower molding	S	S	S		S	S	S	S	S	S	S
Color-keyed side rocker panels with lower trim				S							
Color-keyed outside door handles	S	S	S	S	S	S	S	S	S	S	S
Rear spoiler with LED center high-mount stop light	S	S	S	S	S	S	S	S	S	S	S
A-pillar in black low-gloss film	S	S	S				S	S	S		
A-pillar in black high-gloss film				S	S	S				S	S
Power tilt/slide moonroof with sunshade and one-touch open/close with jam protection			S	S	S			S	S	S	
Power Panoramic View Moonroof with sunshade and one-touch open/close with jam protection						S					S

See numbered footnotes in Disclosures section.

HIGHLANDER FEATURES

S = Standard O = Optional P = Available as part of a package

Exterior (continued)	L	LE	XLE	XSE	Limited	Platinum	Hybrid LE	Hybrid XLE	Hybrid Bronze Edition	Hybrid Limited	Hybrid Platinum
Height-adjustable power liftgate with jam protection		S	S	S			S	S			
Height-adjustable hands-free power liftgate with jam protection ³					S	S			S	S	S
Silver-finish roof rails ⁴⁹			S		S	S		S	S	S	S
Black-finish roof rails ⁴⁹				S							
Rear bumper scuff plate						S					S
Twin-tip exhaust				S							
Interior											
Power windows with auto up/down in all positions and jam protection	S	S	S	S	S	S	S	S	S	S	S
Three-zone automatic climate control with air filter, separate second-row control panel, individual temperature settings for driver, front passenger and rear-seat passengers, and second- and third-row vents	S	S	S	S	S	S	S	S	S	S	S
Black interior door handles	S	S					S				
Chrome-finished interior door handles			S	S	S	S		S	S	S	S
Power door locks with shift-linked automatic lock/unlock feature	S	S	S	S	S	S	S	S	S	S	S
Soft-touch roll-top center console (15L) with removable utility tray	S	S	S	S	S	S	S	S	S	S	S
Qi-compatible wireless smartphone charging ⁴ with charge indicator light			S	S	S	S		S	S	S	S
Soft-touch in-dash split-level shelf	S	S	S	S	S	S	S	S	S	S	S
Fourteen cup and bottle holders	S	S	S	S	S	S	S	S	S	S	S
Dual sun visors with sliding function and illuminated vanity mirrors	S	S	S	S	S	S	S	S	S	S	S
Overhead console with conversation mirror, sunglasses storage and maplights	S	S	S	S	S	S	S	S	S	S	S
Day/night rearview mirror	S	S					S				
Auto-dimming rearview mirror with HomeLink ⁴⁴² universal garage door opener			S	S	S			S		S	
Digital rearview mirror with HomeLink ⁴⁴² universal garage door opener						S			S		S
Fabric-trimmed front- and second-row seats; 8-way power-adjustable driver's seat; 4-way manual-adjustable front passenger seat	S	S					S				
SofTex [®] -trimmed ⁴³ front- and second-row seats; heated front seats; 10-way power-adjustable driver's seat including power lumbar support; 8-way power-adjustable front passenger seat			S	S				S	S		
Leather-trimmed front- and second-row seats; heated front seats; 10-way power-adjustable driver's seat including power lumbar support; 8-way power-adjustable front passenger seat					O						
Leather-trimmed front- and second-row seats; heated and ventilated front seats; 10-way power-adjustable driver's seat including power lumbar support; 4-way power-adjustable front passenger seat; seat memory function					S	S				S	S
8-passenger seating with 60/40 split, sliding and reclining fold-flat second-row bench seats; 60/40 split, fold-flat third-row seats with sliding headrests and recline function	S	S	O		O		S	O			
7-passenger seating with second-row fold-down captain's chairs and fold-down inboard armrests, adjustable headrests and two cup holders mounted on the floor; and 60/40 split, fold-flat third-row seats with sliding headrests and recline function			S	S	S	S		S	S	S	S
Heated second row						S					S
Second-row sunshades			S	S	S	S		S	S	S	S
Tilt/telescopic steering wheel with audio, Multi-Information Display (MID), Bluetooth ^{®54} hands-free phone, voice-command, Dynamic Radar Cruise Control (DRCC), ³¹ Lane Departure Alert (LDA), ³² Lane Steering Assist (LSA) ³² and multimedia information controls	S										
Leather-trimmed shift knob and tilt/telescopic leather steering wheel with audio, Multi-Information Display (MID), Bluetooth ^{®54} hands-free phone, voice-command, Dynamic Radar Cruise Control (DRCC), ³¹ Lane Departure Alert (LDA), ³² Lane Steering Assist (LSA) ³² and multimedia information controls		S	S	S			S	S	S		
Leather-trimmed shift knob and heated tilt/telescopic leather-trimmed steering wheel with audio, Multi-Information Display (MID), Bluetooth ^{®54} hands-free phone, voice command, Dynamic Radar Cruise Control (DRCC), ³¹ Lane Departure Alert (LDA), ³² Lane Steering Assist (LSA) ³² and multimedia information controls					S	S				S	S

HIGHLANDER FEATURES

S = Standard O = Optional P = Available as part of a package

Interior (continued)	L	LE	XLE	XSE	Limited	Platinum	Hybrid LE	Hybrid XLE	Hybrid Bronze Edition	Hybrid Limited	Hybrid Platinum
7-in. color LCD Multi-Information Display (MID) in meter cluster with odometer, trip/average fuel economy, cruising range, average speed, AWD torque distribution (AWD models only), cruise control guide, audio status, hands-free incoming call notices, telephone information, Eco Driving Indicator, and energy monitor (HV models only)	S	S	S	S			S	S	S		
12.3-in. color LCD Multi-Information Display (MID) with odometer, trip/average fuel economy, cruising range, average speed, AWD torque distribution (AWD models only), cruise control guide, audio details, hands-free incoming call notices, telephone information, Eco Driving Indicator, and energy monitor (HV models only)					S	S				S	S
10-in. color Head-Up Display (HUD) with speedometer and Road Sign Assist (RSA), ³⁵ navigation ⁵⁵ and Hybrid System Indicator (hybrid models only)						S					S
Five USB ports ³⁶ and two 12V outlets ³⁷	S	S	S	S	S	S	S	S	S	S	S
One 120V outlet ⁴⁴ (100W) located on the bottom rear of the center console					S	S					
Two 120V outlets (1500W shared) ⁷ located on the bottom rear of center console and in the luggage area									S	S	S
Ambient interior lighting				S	S	S			S	S	S
Illuminated front doorsill metal scuff plate						S					S
Illuminated front doorsill metal scuff plate with bronze finish								S			
Painted door, console and dashboard trim	S	S	S				S	S	S		
Ornamental dash trim and faux wood door trim					S	S				S	S
Front doorsill metal scuff plate					S					S	
Cargo area tonneau cover					S	S				S	S
Overhead console with conversation mirror, sunglasses storage and maplights	S	S	S	S	S	S	S	S	S	S	S
Digital clock	S	S	S	S	S	S	S	S	S	S	S

Audio Multimedia

8.0-in. Toyota Audio Multimedia with wireless Apple CarPlay²⁵ & Android Auto²⁴ compatibility, USB media port,³⁶ four USB charge ports,³⁶ hands-free phone capability and music streaming⁵⁴ via Bluetooth⁵⁴ wireless technology, SiriusXM²⁷ with 3-month Platinum Plan trial subscription,²⁸ See toyota.com/audio-multimedia for details.

S S S S S S S S

12.3-in. Toyota Audio Multimedia with wireless Apple CarPlay²⁵ & Android Auto²⁴ compatibility, USB media port,³⁶ four USB charge ports,³⁶ hands-free phone capability and music streaming⁵⁴ via Bluetooth⁵⁴ wireless technology, SiriusXM²⁷ with 3-month Platinum Plan trial subscription,²⁸ See toyota.com/audio-multimedia for details.

O O S S O S S S

11-speaker JBL²² Premium Audio including subwoofer and amplifier

O S S S S S

HIGHLANDER FEATURES

S = Standard O = Optional P = Available as part of a package

Safety and Convenience	L	LE	XLE	XSE	Limited	Platinum	Hybrid LE	Hybrid XLE	Hybrid Bronze Edition	Hybrid Limited	Hybrid Platinum
Toyota Safety Sense™ 2.5+ (TSS 2.5+)²⁹	S	S	S	S	S	S	S	S	S	S	S
Star Safety System™ — includes Enhanced Vehicle Stability Control (VSC)⁵⁶ Traction Control (TRAC), Anti-lock Brake System (ABS), Electronic Brake-force Distribution (EBD), Brake Assist (BA)⁵⁷ and Smart Stop Technology® (SST)⁵⁸	S	S	S	S	S	S					
STAR SAFETY SYSTEM™ Star Safety System™ — includes Electronically Controlled Braking (ECB), Vehicle Dynamics Integrated Management (VDIM)⁵⁹ Enhanced Vehicle Stability Control (VSC)⁵⁶ Traction Control (TRAC), Anti-lock Brake System (ABS), Electronic Brake-force Distribution (EBD), Brake Assist (BA)⁵⁷ and Smart Stop Technology® (SST)⁵⁸							S	S	S	S	S
Eight airbags³⁸ — driver airbag, front passenger airbag, driver knee airbag, front passenger seat cushion airbag, front side airbags, curtain shield airbags	S	S	S	S	S	S	S	S	S	S	S
Safety Connect®⁹ — includes Emergency Assistance, Stolen Vehicle Locator,¹ Roadside Assistance¹⁰ and Automatic Collision Notification. Available by subscription. Up to 10-year trial subscription.⁹	S	S	S	S	S	S	S	S	S	S	S
3-point seatbelts for all seating positions; driver's-side Emergency Locking Retractor (ELR) and Automatic/Emergency Locking Retractor (ALR/ELR) on all passenger seatbelts	S	S	S	S	S	S	S	S	S	S	S
LATCH (Lower Anchors and Tethers for CHildren) includes lower anchors and tethers on outboard second-row seats and tether anchor on middle- and third-row seats	S	S	S	S	S	S	S	S	S	S	S
Child-protector rear door locks and power window lockout control	S	S	S	S	S	S	S	S	S	S	S
Driver and front passenger seatbelt warning	S	S	S	S	S	S	S	S	S	S	S
Rear passenger seatbelt reminder	S	S	S	S	S	S	S	S	S	S	S
Rear-seat reminder³⁹	S	S	S	S	S	S	S	S	S	S	S
Adjustable front seatbelt shoulder anchors and driver and front passenger seatbelt pretensioners with force limiters	S	S	S	S	S	S	S	S	S	S	S
Downhill Assist Control (DAC)⁶⁰	O	O	O	O	O	O					
Anti-theft system with engine immobilizer⁶¹	S										
Engine immobilizer⁶¹ alarm		S	S	S	S	S	S	S	S	S	S
Tire Pressure Monitor System (TPMS)⁶² (individual tires)	S	S	S	S	S	S	S	S	S	S	S
Snow Mode + Drive Mode Select (Eco, Normal, Sport)	S	S	S	S	S	S					
Snow Mode + Drive Mode Select (Eco, Normal, Sport) + Multi-Terrain Select (MTS) (Mud/Sand, Rock/Dirt, Normal)	O	O	O	O	O	O					
Hill Start Assist Control (HAC)⁶³	S	S	S	S	S	S	S	S	S	S	S
Trail Mode							O	O	O	O	O
Front and Rear Parking Assist with Automatic Braking (PA w/AB)⁶⁴					S	S				S	S
Dynamic Torque Vectoring AWD with Driveline Disconnect; Multi-Terrain Select (MTS) with dial				O	O	O					
Predictive Fuel-Efficient Drive⁶⁵								O	S	S	S
Backup camera⁵³ with projected path	S	S	S	S			S	S	S		
Backup camera⁵³ with dynamic gridlines					S					S	
Panoramic View Monitor⁴⁵ with 360-degree Overhead View in low-speed drive and reverse, and Curb View					O	S				O	S

HIGHLANDER SPECIFICATIONS

S = Standard O = Optional P = Available as part of a package

Mechanical/Performance	L	LE	XLE	XSE	Limited	Platinum	Hybrid LE	Hybrid XLE	Hybrid Bronze Edition	Hybrid Limited	Hybrid Platinum
ENGINE											
Gasoline engine — 2.4-liter 4-cylinder turbocharged Double Overhead Cam (DOHC) 16-valve D-4S injection engine with Dual Variable Valve Timing with intelligence (VVT-i) with Stop and Start Engine System (S&S); ⁶⁶ 265 hp @ 6000 rpm, 310 lb.-ft. @ 1700-3600 rpm	S	S	S	S	S	S					
Hybrid powertrain — 2.5-liter L4HV Double Overhead Cam (DOHC) 16-valve D-4S injection engine with Dual VVT-iE (Variable Valve Timing-intelligent intake controlled by electric motor); combined net 243 hp, includes combustion engine with 186 hp @ 6000 rpm; 175 lb.-ft. @ 4400 rpm							S	S	S	S	S
EMISSION RATING											
Super Ultra Low Emission Vehicle 30 (SULEV 30) ⁶⁷	S	S	S	S	S	S	S	S	S	S	S
ELECTRIC MOTORS											
Permanent magnet synchronous motors (two front, FWD)							S	S	S	S	S
Permanent magnet synchronous motors (two front, one rear, AWD)							O	O	O	O	O
TRACTION BATTERY											
Battery type: sealed Nickel-Metal Hydride (Ni-MH)							S	S	S	S	S
TRANSMISSION											
Direct Shift-8AT 8-speed Electronically Controlled automatic Transmission (ECT)	S	S	S	S	S	S					
Electronically controlled Continuously Variable Transmission (ECVT) with sequential shift mode							S	S	S	S	S
DRIVETRAIN											
Front-Wheel Drive (FWD)	S	S	S	S	S	S	S	S	S	S	S
All-Wheel Drive (AWD)	O	O	O								
Dynamic Torque Vectoring AWD					O	O	O				
Electronic On-Demand AWD system							O	O	O	O	O
BODY											
Reinforced unibody	S	S	S	S	S	S	S	S	S	S	S
SUSPENSION											
Independent MacPherson strut front suspension with stabilizer bar; trailing-wishbone suspension	S	S	S		S	S	S	S	S	S	S
Sport-tuned independent MacPherson strut front suspension with stabilizer bar; trailing-wishbone suspension				S							
STEERING											
Electric Power Steering (EPS); power-assisted rack-and-pinion	S	S	S	S	S	S	S	S	S	S	S
Turning radius (ft.)	18.7	18.7	18.7	18.7	18.7	18.7	18.7	18.7	18.7	18.7	18.7
Turning circle diameter (ft.)	37.4	37.4	37.4	37.4	37.4	37.4	37.4	37.4	37.4	37.4	37.4
BRAKES											
Power-assisted ventilated 13.3-in. front disc brakes; solid 13.3-in. rear disc brakes and Star Safety System™	S	S	S	S	S	S					
Power-assisted ventilated 13.3-in. front disc brakes; solid 13.3-in. rear disc brakes with Electronically Controlled Braking (ECB) system, integrated regenerative braking and Star Safety System™							S	S	S	S	S

HIGHLANDER SPECIFICATIONS

S = Standard O = Optional P = Available as part of a package

Dimensions	L	LE	XLE	XSE	Limited	Platinum	Hybrid LE	Hybrid XLE	Hybrid Bronze Edition	Hybrid Limited	Hybrid Platinum
EXTERIOR (in.)											
Overall length/width	194.9/76.0	194.9/76.0	194.9/76.0	197.4/76.0	194.9/76.0	194.9/76.0	194.9/76.0	194.9/76.0	194.9/76.0	194.9/76.0	194.9/76.0
Unloaded height (no antenna)	68.1	68.1	68.1	68.1	68.1	68.1	68.1	68.1	68.1	68.1	68.1
Wheelbase	112.2	112.2	112.2	112.2	112.2	112.2	112.2	112.2	112.2	112.2	112.2
Track (front/rear)	65.3/65.4	65.3/65.4	65.3/65.4	65.3/65.4	65.3/65.4	65.3/65.4	65.3/65.4	65.3/65.4	65.3/65.4	65.3/65.4	65.3/65.4
INTERIOR (front/second-row/third-row seats) (in.)											
Head room	41.2/39.4/36.1	41.2/39.4/36.1	39.6/39.4/36.1	39.6/39.4/36.1	39.6/39.4/36.1	38.4/37.1/36.1	41.2/39.4/36.1	39.6/39.4/36.1	39.6/39.4/36.1	39.6/39.4/36.1	38.4/37.1/36.1
Shoulder room (with shade)			59.0/58.4/55.0	59.0/58.4/55.0	59.0/58.4/55.0	59.0/58.4/55.0		59.0/58.4/55.0	59.0/58.4/55.0	59.0/58.4/55.0	59.0/58.4/55.0
Shoulder room (w/o shade)	59.0/58.7/55.0	59.0/58.7/55.0					59.0/58.7/55.0				
Hip room	57.2/57.0/45.6	57.2/57.0/45.6	57.2/57.0/45.6	57.2/57.0/45.6	57.2/57.0/45.6	57.2/57.0/45.6	57.2/57.0/45.6	57.2/57.0/45.6	57.2/57.0/45.6	57.2/57.0/45.6	57.2/57.0/45.6
Leg room	42.0/38.7/28.0	42.0/38.7/28.0	42.0/38.7/28.0	42.0/38.7/28.0	42.0/38.7/28.0	42.0/38.7/28.0	42.0/38.7/28.0	42.0/38.7/28.0	42.0/38.7/28.0	42.0/38.7/28.0	42.0/38.7/28.0
OFF-HIGHWAY											
Approach/departure angle (degrees)	18.1/23.5	18.1/23.5	18.1/23.5	18.1/23.5	18.1/23.5	18.1/23.5	18.1/22.7	18.1/22.7	18.1/22.7	18.1/22.7	18.1/22.7
Ramp breakover angle	16.7	16.7	16.7	16.7	16.7	16.7	16.7	16.7	16.7	16.7	16.7
Ground clearance (in.)	8	8	8	8	8	8	8	8	8	8	8
Weights/Capacities											
Curb weight (lb.) (standard seating config.)	4155	4155	4199	4221	4265	4265	4330	4365	4365	4430	4430
Gross Vehicle Weight Rating (GVWR) (lb.) (standard seating config.)	5870	5870	5870	5870	5870	5870	5960	5960	5960	5960	5960
EPA passenger volume (cu. ft.) without moonroof, first/second/third row	141.8	141.8					141.8				
EPA passenger volume (cu. ft.) with moonroof, first/second/third row			139.5	139.5	139.5			139.5	139.5	139.5	
EPA passenger volume (cu. ft.) with panoramic moonroof, first/second/third row						136.3					136.3
Cargo volume (cu. ft.) ⁵⁰ behind front/second-row/third-row seats	84.3/48.4/16.0	84.3/48.4/16.0	84.3/48.4/16.0	84.3/48.4/16.0	84.3/48.4/16.0	84.3/48.4/16.0	84.3/48.4/16.0	84.3/48.4/16.0	84.3/48.4/16.0	84.3/48.4/16.0	84.3/48.4/16.0
Fuel tank (gal.)	17.9	17.9	17.9	17.9	17.9	17.9	17.1	17.1	17.1	17.1	17.1
Seating capacity (standard/optional)	8	8	7/8	7	7/8	7	8	7/8	7	7	7
TOWING											
Towing capacity (lb.) ²	5000	5000	5000	5000	5000	5000	3500	3500	3500	3500	3500
Trailer-Sway Control (TSC) ⁶⁸	S	S	S	S	S	S	S	S	S	S	S
TIRES											
All-Season tires	S	S	S	S	S	S	S	S	S	S	S
Temporary spare tire	S	S	S	S	S	S	S	S	S	S	S

Mileage Estimates (mpg city/highway/combined)

Hybrid FWD ⁵							36/35/36	36/35/36	36/35/36	36/35/36	36/35/36
4-cylinder Gas FWD ¹	22/29/25	22/29/25	22/29/25	22/29/25	22/29/25	22/29/25					

DISCLOSURES

1. EPA-estimated 22 city/29 highway/25 combined mpg rating for 2023 Highlander L FWD, LE FWD, XLE FWD, XSE FWD, Limited FWD and Platinum FWD; EPA-estimated 21 city/28 highway/24 combined mpg rating for 2023 Highlander L AWD, LE AWD, XLE AWD, Limited AWD and Platinum AWD. Use for comparison purposes only. Your mileage will vary for many reasons, including your vehicle's condition and how/where you drive. See www.fueleconomy.gov. 2. Before towing, confirm your vehicle and trailer are compatible, hooked up and loaded properly and that you have any necessary additional equipment. Do not exceed any Weight Ratings and follow all instructions in your *Owner's Manual*. The maximum you can tow depends on base curb weight plus the total weight of any cargo, occupants, and added vehicle equipment. "Added vehicle equipment" includes additional standard/optional equipment and accessories added by the manufacturer, dealers, and/or vehicle owners. The only way to be certain of your vehicle's exact curb weight is to weigh your vehicle without passengers or cargo. [Calculated with the new SAE J2807 method.] See *Owner's Manual* for limitations. 3. Water, weather, dirt, and other conditions also may cause the sensor to not operate properly or to operate unintentionally. See *Owner's Manual* for limitations. 4. Qi wireless charging may not be compatible with all mobile phones, MP3/WMA players and like models. When using the wireless charging system, avoid placing metal objects between the wireless charger and the mobile device when charging is active. Doing so may cause metal objects to become hot and could cause burns. 5. EPA-estimated 36 city/35 highway/36 combined mpg rating for 2023 Highlander Hybrid LE FWD, Hybrid XLE FWD, Hybrid Bronze Edition FWD, Hybrid Limited FWD and Hybrid Platinum FWD. EPA-estimated 35 city/35 highway/35 combined mpg rating for 2023 Highlander Hybrid LE AWD, Hybrid XLE AWD, Hybrid Bronze Edition AWD, Hybrid Limited AWD and Hybrid Platinum AWD. Use for comparison purposes only. Your mileage will vary for many reasons, including your vehicle's condition and how/where you drive. See www.fueleconomy.gov. 6. EV Mode lets you operate solely on battery power at low speeds for short distances and in limited circumstances, such as in a parking garage. Different conditions may prevent or limit usage. See your *Owner's Manual* for limitations and details. 7. Rated for 1500 watts shared between both outlets. See *Owner's Manual* for additional limitations and details. 8. Connected Services depend on factors outside Toyota's control, including an operative telematics device, a cellular connection, GPS signal and the availability of a compatible wireless network, without which system functionality and availability may be limited or precluded, including access to response center and emergency support. Service may vary by vehicle and region. Apps and services subject to change at any time without notice. Requires app download/registration and subscription after trial (if applicable). Terms of Use apply. Data usage and charges may apply. See usage precautions and service limitations in *Owner's Manual* and <https://www.toyota.com/connected-services/> for additional limitations and details. To learn about Toyota's Connected Services data collection, use, sharing and retention practices, please visit <https://www.toyota.com/privacycts/>. All trials begin on the original date of purchase or lease of a new vehicle, with the exception of Wi-Fi for which the trial begins at the time of activation. Paid subscription required after trial in order to continue accessing the respective services. Terms of Use apply. Connected Services trials are at no extra cost. All trials begin on the original date of purchase or lease of a new vehicle, with the exception of Wi-Fi for which the trial begins at the time of activation. Paid subscription required after trial in order to continue accessing the respective services. Terms of Use apply. 9. Safety Connect® depends on factors outside of Toyota's control, including an operative telematics device, a cellular connection, GPS signal, and the availability of a compatible wireless network, without which system functionality and availability may be limited or precluded, including access to response center and emergency support. Stolen vehicle police report required to use Stolen Vehicle Locator. Automatic Collision Notification activates only in limited circumstances. Requires app download/registration and subscription after trial (if applicable). Service subject to change at any time without notice. Terms of Use apply. Service may vary by vehicle and region. See usage precautions and service limitations in *Owner's Manual* and at toyota.com/connected-services for additional details. To learn about Toyota's Connected Services data collection, use, sharing and retention practices, please visit <https://www.toyota.com/privacycts/>. The Safety Connect® trial period (if applicable) is at no extra cost and begins on the original date of purchase or lease of a new vehicle. Subscription required after trial to access the service. 10. Requires adequate cellular coverage and GPS signal strength. May not work in all areas. Service may vary by vehicle and region. See Toyota Dealer for details and exclusions. 11. Building and/or parking structures may limit system effectiveness. Stolen vehicle police report required to use Stolen Vehicle Locator. For additional assistance contact the Toyota Customer Experience Center at 1-800-331-4331. 12. Depends on operative telematics device, a compatible wireless network and other factors. Requires app download/registration and subscription after trial. Also will require subscriptions to any of Safety Connect®, Remote Connect or Drive Connect. Terms of Use apply. Services may vary and are subject to change without notice. Data charges may apply. See *Owner's Manual*, <https://www.toyota.com/connected-services/>. To learn about Toyota's Connected Services data collection, use, sharing and retention practices, please visit <https://www.toyota.com/privacycts/>. The Service Connect trial period is at no extra cost and begins on the original date of purchase or lease of a new vehicle. Service Connect is not renewable as a stand-alone service and requires a subscription to any of Safety Connect®, Remote Connect or Drive Connect upon trial expiration. 13. Eligible vehicle and wireless service required. Wi-Fi Connect depends on factors outside of Toyota's control, including an operative telematics device, a cellular connection, GPS signal, and the availability of a compatible wireless network, without which system functionality and availability may be limited or precluded. Wi-Fi Connect coverage and service not available everywhere. Valid in the contiguous U.S. and Alaska. Do not drive distracted. Go to att.com/toyota for terms and conditions. Data usage and charges apply. Up to 5 devices can be supported using in-vehicle connectivity. Apps and services subject to change at any time without notice. The Wi-Fi Connect trial begins at the time of enrollment and expires the earlier of 3GB data use or the 1-month trial period ends. Subscription required after trial. Integrated Streaming requires separate subscriptions to third-party provider services. Terms of Use apply. The Wi-Fi Connect trial begins at the time of enrollment and expires when 30 days or the earlier of 3GB of data is used or the 1-month period ends. Subscription required after trial. Integrated Streaming requires separate subscriptions to third-party provider services. Terms of Use apply. 14. Apple Music and the Apple logo are trademarks of Apple Inc., registered in the U.S. and other countries. Requires Wi-Fi Connect subscription after trial (if applicable) and your own Apple Music account. 15. Amazon Music, and all related marks are trademarks of Amazon Technologies, Inc. or its affiliates. 16. Drive Connect availability and accuracy depend on factors outside of Toyota's control, including an operative telematics device, a cellular connection, GPS signal, and the availability of a compatible wireless network, without which system functionality and availability may be limited or precluded. Services not available in every city or roadway. Services subject to change at any time without notice. Requires app download/registration and subscription required after trial (if applicable). Terms of Use apply. See *Owner's Manual* and <https://www.toyota.com/connected-services/> for additional limitations and details. To learn about Toyota's Connected Services data collection, use, sharing and retention practices, please visit <https://www.toyota.com/privacycts/>. The Drive Connect trial period is at no extra cost and begins on the original date of purchase or lease of a new vehicle. Paid subscription required after trial (if applicable) to access the service. Terms of Use apply. 17. Destination Assist depends on factors outside of Toyota's control, including an operative telematics device, a cellular connection, GPS signal, and the availability of a compatible wireless network, without which system functionality and availability may be limited or precluded. Use common sense when relying on this information. Service may vary by vehicle and region. Registration required. Subscription required after trial. Services subject to change at any time without notice. Terms of Use apply. Data charges may apply. See *Owner's Manual* and <https://www.toyota.com/connected-services/> for additional limitations and details. To learn about Toyota's Connected Services data collection, use, sharing and retention practices, please visit <https://www.toyota.com/privacycts/>. The Destination Assist trial period is at no extra cost and begins on the original date of purchase or lease of a new vehicle. Paid subscription required after trial to access the service. 18. Use only if aware of circumstances surrounding vehicle and it is legal and safe to do so (e.g., do not remotely start engine if vehicle is in an enclosed space or vehicle is occupied by a child). Remote Connect depends on factors outside of Toyota's control, including an operative telematics device, a cellular connection, GPS signal, and the availability of a compatible wireless network, without which system functionality and availability may be limited or precluded. Digital Key also requires Bluetooth® connectivity. Service may vary by vehicle and region. Requires app download and registration/subscription after trial (if applicable). Terms of Use apply. Data charges may apply. Remote start/stop not available on manual transmission-equipped vehicles. Services subject to change at any time without notice. See usage precautions and service limitations in Toyota *Owner's Manual* and at <https://www.toyota.com/connected-services/> for additional details. To learn about Toyota's Connected Services data collection, use, sharing and retention practices, please visit <https://www.toyota.com/privacycts/>. The Remote Connect trial period (if applicable) is at no extra cost and begins on the original date of purchase or lease of a new vehicle. Subscription required after trial to access the service. Terms of Use apply. 19. Digital Key function requires active Remote Connect trial or subscription. Depends on operative telematics device, availability of compatible wireless network and other factors. Use only if aware of vehicle surroundings and it is legal and safe (ex., do not use if vehicle is in enclosed space or is occupied by a child). Subject to change without notice. Requires app download and registration/subscription after trial (if applicable). Not available on vehicles with manual transmission. Terms of Use apply. Data charges may apply. See Toyota *Owner's Manual* and <https://www.toyota.com/connected-services/>. To learn about Toyota's Connected Services data collection, use, sharing and retention practices, please visit <https://www.toyota.com/privacycts/>. 20. Not all smartwatches are compatible with Remote Connect: Samsung Gear, Fitbit, Garmin are not compatible. 21. Google is a trademark of Google LLC. 22. JBL® is a registered trademark of Harman International Industries, Inc. 23. Android is a trademark of Google LLC. 24. Android™ and Android Auto™ are trademarks of Google LLC. To wirelessly use Android Auto™ on your car display, you need a compatible Android™ smartphone with an active data plan. You can check which smartphones are compatible at g.co/androidauto/requirements. 25. Apps and services are subject to change at any time without notice. Data charges may apply. Apple CarPlay® functionality requires a compatible iPhone® connected wirelessly to the vehicle. Apple CarPlay® is a registered trademark of Apple Inc. 26. iPhone® is a registered trademark of Apple Inc. All rights reserved. 27. Trial length and service availability may vary by model, model year or trim. Service will automatically stop at the end of your trial subscription period unless you decide to continue service. If you do not wish to enjoy your trial, you can cancel by calling the number below. All SiriusXM services require a subscription, each sold separately by SiriusXM after the trial period. **Service subject to the SiriusXM Customer Agreement and Privacy Policy; visit www.siriusxm.com to see complete terms and how to cancel which includes calling 1-866-635-2349.** Some services and features are subject to device capabilities and location availability. All fees, content and features are subject to change. SiriusXM, Pandora and all related logos are trademarks of Sirius XM Radio Inc. and its respective subsidiaries. 28. SiriusXM trial length and service availability may vary by model, model year or trim. 29. Toyota Safety Sense™ effectiveness is dependent on many factors including road, weather and vehicle conditions. Drivers are responsible for their own safe driving. Always pay attention to your surroundings and drive safely. See *Owner's Manual* for additional limitations and details. 30. The Pre-Collision System (PCS) with Pedestrian Detection (PD) is designed to determine if impact is imminent and help reduce impact speed and damage in certain frontal collisions involving a vehicle, a pedestrian or a bicyclist. PCS w/PD is not a substitute for safe and attentive driving. System effectiveness depends on many factors, such as speed, size and position of pedestrian or bicyclist and weather, light and road conditions. See *Owner's Manual* for additional limitations and details. 31. Full-Speed Range Dynamic Radar Cruise Control (DRCC) is designed to assist the driver and is not a substitute for safe and attentive driving practices. System effectiveness is dependent on many factors including road, weather and traffic conditions. Vehicles with manual transmission have regular DRCC. See *Owner's Manual* for additional limitations and details. 32. Lane Departure Alert with Steering Assist is designed to read visible lane markers under certain conditions. It provides a visual and audible alert and slight steering force when lane departure is detected. It is not a collision-avoidance system or a substitute for safe and attentive driving. Effectiveness is dependent on many factors including road, weather and vehicle conditions. See *Owner's Manual* for additional limitations and details. 33. Automatic High Beams operate at speeds above 25 mph. Factors such as a dirty windshield, weather, lighting and terrain limit effectiveness, requiring the driver to manually operate the high beams. See *Owner's Manual* for additional limitations and details. 34. The Lane Tracing Assist (LTA) lane centering function is designed

DISCLOSURES

to read visible lane markers and detect other vehicles under certain conditions. It is only operational when DRCC is engaged. Not available on vehicles with manual transmissions. See *Owner's Manual* for additional limitations and details. **35.** Do not rely exclusively on Road Sign Assist (RSA). RSA is a driver support system that utilizes the vehicle's forward-facing camera and navigation system (when data is available) to recognize certain road signs and provide information to the driver via the multi-information display and/or Head-Up Display. Effectiveness is dependent on road, weather, vehicle and sign conditions. Use common sense when using RSA and do not drive distracted. See *Owner's Manual* for additional limitations and details. **36.** May not be compatible with all mobile phones, MP3/WMA players and like models. **37.** Rated for 12 volts/10 amps. See *Owner's Manual* for additional limitations and details. **38.** Airbag systems are Supplemental Restraint Systems and are designed to inflate only under certain conditions and in certain types of severe collisions. To decrease the risk of injury from an inflating airbag, always wear seatbelts and sit upright in the middle of the seat as far back as possible. Do not put objects in front of an airbag or around the seatback. Do not use a rearward-facing child seat in any front passenger seat. See *Owner's Manual* for additional limitations and details. **39.** The Rear-Seat Reminder does not sense objects in the rear seat. The Rear-Seat Reminder is designed to recognize a unique rear-door opening pattern that may be consistent with an object being placed in the rear seating area. See *Owner's Manual* for additional details. **40.** Do not rely exclusively on the Blind Spot Monitor. Always look over your shoulder and use your turn signal. There are limitations to the function, detection and range of the monitor. See *Owner's Manual* for additional limitations and details. **41.** Do not rely exclusively on the Rear Cross-Traffic Alert system. Always look over your shoulder and use your mirrors to confirm rear clearance. There are limitations to the function, detection and range of the system. See *Owner's Manual* for additional limitations and details. **42.** HomeLink® and the HomeLink® house icon are registered trademarks of Gentex Corporation. **43.** SofTex® is a registered trademark of Toyota Motor Sales, U.S.A., Inc. **44.** Do not exceed 120V. See *Owner's Manual* for additional limitations and details. **45.** The Panoramic View Monitor does not provide a comprehensive view of the area surrounding the vehicle. You should also look around outside your vehicle and use your mirrors to confirm surrounding clearance. Environmental conditions may limit effectiveness and view may become obscured. See *Owner's Manual* for additional limitations and details. **46.** The Adaptive Front-Lighting System helps improve night vision. Situations such as a dirty windshield, rapidly changing light conditions or hilly terrain may limit effectiveness, requiring the driver to manually turn off the system. See *Owner's Manual* for additional limitations and details. **47.** This floor mat/floor liner was designed specifically for use in your model and model year vehicle and SHOULD NOT be used in any other vehicle. To avoid potential interference with pedal operation, each mat/liner must be secured with its fasteners. Do not install a floor mat/floor liner on top of an existing floor mat/floor liner. **48.** Extra-cost color. **49.** Do not overload your vehicle. See *Owner's Manual* for weight limits and restrictions. **50.** Cargo and load capacity limited by weight and distribution. Always properly secure cargo and cargo area. **51.** Dashcam may not record under certain conditions. Always respect the privacy rights of others. See your dashcam *Owner's Manual* for details. **52.** Toyota strives to build vehicles to match customer interest and thus they typically are built with popular options and option packages. Not all options/packages are available separately and some may not be available in all regions of the country. If you would prefer a vehicle with no or different options, contact your dealer to check for current availability or the possibility of placing a special order. Color(s) depicted may vary based on multiple factors, including ambient lighting and the format in which it is being viewed (e.g., computer, mobile device or print). **53.** The backup camera does not provide a comprehensive view of the rear area of the vehicle and you should also look around the vehicle, using mirrors to confirm rearward clearance. Environmental conditions may limit effectiveness and view may become obscured. See *Owner's Manual* for additional limitations and details. **54.** The Bluetooth® word mark and logos are registered trademarks owned by Bluetooth SIG, Inc., and any use of such marks by Toyota is under license. A compatible Bluetooth®-enabled phone must first be paired. Phone performance depends on software, coverage and carrier. **55.** Be sure to obey traffic regulations and maintain awareness of road and traffic conditions at all times. Functionality, availability and accuracy of information provided by the system depends on many factors and service may not be available in every location. Use common sense when relying on information provided. Apps/services vary by phone/carrier. Select apps use large amounts of data; you are responsible for charges. Apps and services subject to change at any time without notice. See toyota.com/connected-services for details. Services and programming subject to change. Updates may be available from your dealer at an additional cost. See *Owner's Manual* for additional limitations and details. **56.** Vehicle Stability Control is an electronic system designed to help the driver maintain vehicle control under adverse conditions. It is not a substitute for safe and attentive driving practices. Factors including speed, road conditions, weather and driver steering input can all affect whether VSC will be effective in preventing a loss of control. See *Owner's Manual* for additional limitations and details. **57.** Brake Assist is designed to help the driver take advantage of ABS and is not a substitute for safe driving practices. Braking effectiveness also depends on proper vehicle maintenance, tire and road conditions. See *Owner's Manual* for additional limitations and details. **58.** Smart Stop Technology® operates only in the event of certain contemporaneous brake and accelerator pedal applications. When engaged, the system will reduce power to help the brakes bring the vehicle to a stop. Factors including speed, road conditions and driver input can all impact stopping distance. Smart Stop Technology® is not a substitute for safe and attentive driving and does not guarantee instant stopping. See *Owner's Manual* for additional limitations and details. **59.** Vehicle Dynamics Integrated Management (VDIM) is an electronic system designed to help the driver maintain vehicle control under adverse conditions. It is not a substitute for safe and attentive driving practices. Factors including speed, road conditions, weather and driver steering input can all affect whether VDIM will be effective in preventing a loss of control. See *Owner's Manual* for additional limitations and details. **60.** Downhill Assist Control is designed to help driver maintain vehicle control and speed on steep, downhill descents and is not a substitute for safe driving judgment and practices. Factors including speed, grade, surface conditions and driver input can affect the DAC's ability to prevent loss of control. See *Owner's Manual* for additional limitations and details. **61.** The engine immobilizer is a state-of-the-art anti-theft system that is initiated when you insert your key into the ignition switch or bring a Smart Key fob into the vehicle. The engine will only start if the code in the transponder chip inside the key/fob matches the code in the vehicle's immobilizer. The transponder chip is embedded in the key/fob and can be costly to replace. If you lose a key or fob, your Toyota dealer can help or go to www.aloa.org to find a qualified locksmith in your area who can perform high-security key service. **62.** The Tire Pressure Monitor System alerts the driver when tire pressure is critically low. For optimal tire wear and performance, tire pressure should be checked regularly with a gauge; do not rely solely on the monitor system. See *Owner's Manual* for additional limitations and details. **63.** Hill Start Assist Control is designed to help minimize backward rolling on steep ascents. It is not a substitute for safe driving judgment and practices. Factors including speed, grade, surface conditions and driver input can all affect whether HAC will be effective in preventing a loss of control. See *Owner's Manual* for additional limitations and details. **64.** At speeds of 9 mph or less, Front and Rear Parking Assist with Automatic Braking (PA w/AB) is designed to assist drivers in avoiding potential collisions with nearby static objects when the vehicle is in Drive or Reverse and approaching crossing vehicles when the vehicle is in Reverse. Do not overly rely on PA w/AB. Always look around outside the vehicle and use mirrors to confirm clearance. Certain vehicle and environmental factors, including an object or vehicle's shape, size and composition, may affect the system's effectiveness. See *Owner's Manual* for additional limitations and details. **65.** Predictive Fuel-Efficient Drive systems require a destination entry in the navigation system for use. See *Owner's Manual* for details. **66.** Before towing, confirm Stop and Start Engine System is disengaged (V6 gas models only). **67.** Meets Tier 2/Bin 3 Federal emissions standard. **68.** Trailer-Sway Control (TSC) is an electronic system designed to help the driver maintain vehicle control under adverse conditions. It is not a substitute for safe driving practices. Factors including speed, road conditions, weather and driver steering input can all affect whether TSC will be effective in preventing a loss of control. See *Owner's Manual* for additional limitations and details.

Toyota strives to build vehicles to match customer interest and thus they typically are built with popular options and option packages. Not all options/packages are available separately and some may not be available in all regions of the country. See toyota.com for information about options/packages commonly available in your area. If you would prefer a vehicle without any or with different options, contact your dealer to check for current availability or the possibility of placing a special order.

Color(s) depicted may vary based on multiple factors, including ambient lighting and the format in which it is being viewed (e.g., computer, mobile device or print).

Toyota Highlander is designed to meet most off-road driving requirements. Abusive use may result in bodily harm or damage. Toyota encourages responsible operation to protect you, your vehicle and the environment. Seatbelts should be worn at all times. Please do not allow passengers to ride in the cargo area. Towing hitch receivers/ball mount kits are not intended to provide crash protection.

For details on vehicle specifications, standard features and available equipment in your area, contact your Toyota dealer. A vehicle with particular equipment may not be available at the dealership. Ask your Toyota dealer to help locate a specifically equipped vehicle.

All information presented herein is based on data available at the time of posting, is subject to change without notice and pertains specifically to mainland U.S.A. vehicles only. Vehicles shown may be prototypes, shown using visual effects and/or shown with options. Actual models may vary.



For Toyota Mobility program details, go to www.toyota.com/mobility or call the Toyota Brand Engagement Center at 1-800-331-4331